

Beacon Series „N“

LED steady/flashing beacon NES
 LED strobe/double strobe beacon NFS
 LED multi colour beacon NMS
 LED multi strobe beacon HP - NFS-HP
 LED multi colour beacon HP - NMS-HP



Model overview	Ø 90 mm	Light source
LED steady/flashing beacon	NES	3 High Power LEDs
LED strobe/double strobe beacon	NFS	3 High Power LEDs
LED multi strobe beacon „HIGH PERFORM.“	NFS-HP	3 High Power LEDs
LED multi colour beacon	NMS	each 15 standard LEDs in red-yellow-grün
LED multi colour beacon „HIGH PERFORMANCE“	NMS-HP	each 3 standard LEDs in red-yellow-grün

Mounting options

- Horizontal mounting (standard)
flat gasket and seal washers included



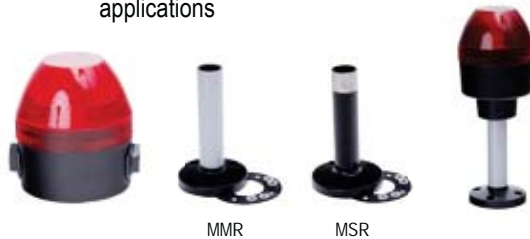
- Magnetic mounting
Accessory: Magnet (metal)
screws/nuts, mounting plate included



- Vertical mounting
Accessory: metal bracket WMS, black
screws/nuts included

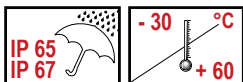


- Pole mounting
(gasket included)
Accessories
MMR - aluminium tube with plastic foot, balck
MSR - stainless steel tube with zinc die-cast foot,
powder coated, recommended for vibrating
applications



Cable entry options

- Grommet from bottom (standard)
- Lateral via cable gland M20x1,5 type AKV (accessory)





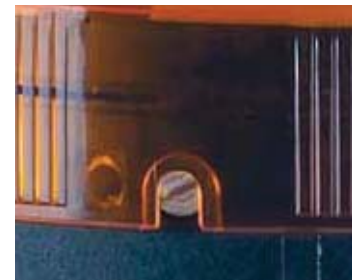
Features

- ▶ Modern LED beacons in compact design (Ø 90 mm)
- ▶ HIGH PERFORMANCE models for high signalling requirements (e.g. in sun light)
- ▶ **NFS-HP**
3 LED strobe patterns externally switchable via terminal (LED double-/6-times/multistrobe)
Illustration of various danger levels by switching different LED strobe patterns
- ▶ **NMS-HP**
Steady light red-yellow-green for clear signalling e.g. outdoor/in bright sunlight
- ▶ Wide voltage range due to switched mode power supply (NES, NFS-HP, NMS-HP)
- ▶ Excellent light dispersion and signaling effort due to distinct lens optics
- ▶ Shock and vibration resistant, maintenance free, long lifetime (> 50.000 h)
- ▶ Inrush current limitation, emc-safe, leakage up to 0,003 A
- ▶ Safety screw for lens cannot be lost

specially designed and optimized lens/optics



safety screw



Terminal connection/external switching option

Type	Function	DIP switch	La	N	Lb
NES	LED steady light	---	L	N	L
	LED flashing light	---	L	N	
	LED strobe light	0	L	N	
	LED double strobe light	1	L	N	

Type	Function	DIP switch	N	1	2	3
NMS	LED steady light green	0	N	L		
	LED steady light yellow	0	N		L	
	LED steady light red	0	N			L
	LED flashing light green	1	N	L		
	LED flashing light yellow	1	N		L	
	LED flashing light red	1	N			L
	LED alternate flashing green-red	---	N	L		L
	LED alternate flashing green-yellow	---	N		L	
	LED alternate flashing yellow-red	---	N		L	L
	LED alt. flashing green-yellow-red	---	N	L	L	L

NFS-HP	LED double strobe	---	N	L		
	LED 6 times strobe	---	N		L	
	LED multi strobe	---	N			L

NMS-HP	LED steady light green	---	N	L		
	LED steady light yellow	---	N		L	
	LED steady light red	---	N			L



Beacon Series „N“

LED steady/flashing beacon NES
 LED strobe/double strobe beacon NFS
 LED multi colour beacon NMS
 LED multi strobe beacon HP - NFS-HP
 LED multi colour beacon HP - NMS-HP



Technical data

Type	NES	NFS	NMS	NFS-HP	NMS-HP
Housing, colour	polycarbonate, black RAL 9005				
Lens	polycarbonate				
Lens colour	amber, red, clear, blue, green, yellow	clear	clear	amber, red, clear, blue, green, yellow	clear
Cable entry	5-7 mm, grommet at bottom lateral cable gland 7-14 mm (accessory)				
Mounting	horizontal, vertical, pole, magnet				
Duty cycle factor	100 %				
Protection class	IP 65/IP 67, UL type 4/4X/13				
Terminals	2,5 mm ²				
Temperature range	12-24 V	-30 °C to +60 °C	-30 °C to +60 °C	-30 °C to +60 °C	-30 °C to +60 °C
	24-48 V	-30 °C to +60 °C			
	110-240 V	-30 °C to +50 °C			
Light source	LED			High Performance LED	
Life time (light source)	> 50 .000 h				
Flashing frequency	~ 2 Hz	~ 1,4 Hz	~ 1 Hz	double str. 1,4 Hz / 6 times 1,0 Hz / multi strobe	---
Weight	280 g (horizontal base)				



Accessories

Accessories for models with horizontal mounting		Weight	Order No.
WMS	Metal bracket for wall mounting		817 200 900
MGS	Magnetic mount		817 203 900
AKV	Cable gland M20x1,5		698 800 026
Accessories for models with pole mounting			
MMR	Aluminium tube with plastic foot, 50 mm, schwarz		698 806 007
	Aluminium tube with plastic foot, 100 mm, schwarz		698 806 008
	Aluminium tube with plastic foot, 250 mm, schwarz		698 806 009
	Aluminium tube with plastic foot, 400 mm, schwarz		698 806 010
MSR	Stainless steel tube with zinc die-cast foot, powder coated, 50 mm, schwarz		698 806 021
	Stainless steel tube with zinc die-cast foot, powder coated, 100 mm, schwarz		698 806 022
	Stainless steel tube with zinc die-cast foot, powder coated, 250 mm, schwarz		698 806 023
	Stainless steel tube with zinc die-cast foot, powder coated, 400 mm, schwarz		698 806 024

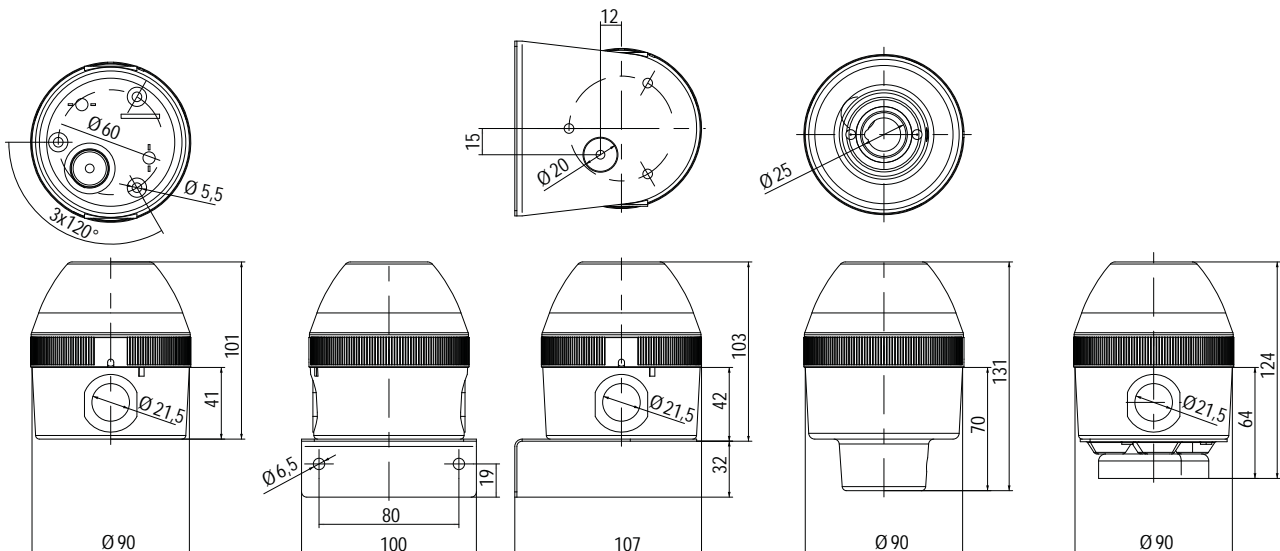


Order data

Type	Denomination	Nominal voltage (V)	Order No.		Voltage range (V)	Nominal current (A)
			Base horizontal	Pole base		
LED steady/flashing beacon						
NES	LED steady/flashing beacon	12-24 V AC/DC	440 10C 405	440 30C 405	11-30 V DC	max. 0,310
					11-26 V AC	max. 0,400
		24-48 V AC/DC	440 10C 408	440 30C 408	16-80 V DC	max. 0,270
					16-60 V AC	max. 0,270
		110-240 V AC/DC	440 10C 413	440 10C 413	80-265 V AC	max. 0,040
LED strobe/double strobe beacon						
NFS	LED strobe/double strobe beacon	24-48 V AC/DC	442 10C 408	442 30C 408	16-60 V DC	max. 0,220
					16-52 V AC	max. 0,271
		110/120 V AC	442 10C 310	442 30C 310	+/- 10%	max. 0,074
					+/- 10%	max. 0,074
		230/240 V AC	442 10C 313	442 30C 313	+/- 10%	max. 0,074
LED multi strobe beacon „HIGH PERFORMANCE“						
NFS-HP	LED multi strobe beacon „HIGH PERFORMANCE“	24-48 V AC/DC	442 15C 408	442 35C 408	16-65 V DC	max. 0,660
					16-52 V AC	max. 0,770
		110-240 V AC/DC	442 15C 413	442 35C 413	80-265 V AC/DC	max. 0,170
LED multi colour beacon						
NMS	LED multi colour beacon green-red-yellow	24 V AC/DC	441 100 405	441 300 405	+/- 10%	max. 0,142
		48 V AC/DC	441 100 408	441 300 408	+/- 10%	max. 0,111
		110/120 V AC	441 100 310	441 300 310	+/- 10%	max. 0,103
		230/240 V AC	441 100 313	441 300 313	+/- 10%	max. 0,100
LED multi colour beacon „HIGH PERFORMANCE“						
NMS-HP	LED multi colour beacon „HIGH PERFORMANCE“	24-48 V AC/DC	441 150 408	441 350 408	16-65 V DC	max. 0,180
					16-52 V AC	max. 0,230
		110-240 V AC/DC	441 150 413	441 350 413	80-265 V AC/DC	max. 0,050

Colour code for lens C

1	amber	5	blue
2	red	6	green
4	clear	7	yellow



DISTRIBUTOR

GEUKEN B.V.

Wattstraat 15a

2723 RA Zoetermeer / NETHERLANDS

Tel. +31 (0)79 361 60 70

Fax +31 (0)79 361 40 90

info@geuken.nl

www.geuken.nl

HEADQUARTERS

**J.AUER – FABRIK ELEKTRISCHER
MASCHINEN Ges.m.b.H.**

Perfektastraße 102

1230 Vienna / AUSTRIA

Tel. +43 (0)1 813 82 20

Fax +43 (0)1 815 99 51

office@auer-signal.com

www.auer-signal.com

SALES GERMANY

J.AUER – SIGNALGERÄTE GmbH

Sperberweg 11

41468 Neuss / GERMANY

Tel. +49 (0)2131 29 86 86-0

Fax +49 (0)2131 29 86 86-6

info@auer-signal.de

www.auer-signal.com