

# ST2 ST6

# MULTISYSTEM

### 1 - 9500-.../...-ST2

CODE	L mm [ft]	
9500-1/...-ST2	1000 [3.28']	
9500-2/...-ST2	2000 [6.56']	
9500-3/...-ST2	3000 [9.84']	

### 1b - 9500.../...ST6

CODE	L mm [ft]	
9500-1/...-ST6	1000 [3.28']	
9500-2/...-ST6	2000 [6.56']	
9500-3/...-ST6	3000 [9.84']	

### 2 - USE

**Ceiling**

**Wall**

**Suspended**

### 3 - CEILING FIXING

With S-9500/114

9504/ST2...  
9504/ST6...

$\oplus T_c \text{ max: } 1 \text{ Nm}$

$< 250 \text{ mm}$   
 $< 9.84''$

250 [0.82']    500 [1.64']    500 [1.64']

4

5

S-9500/114

6

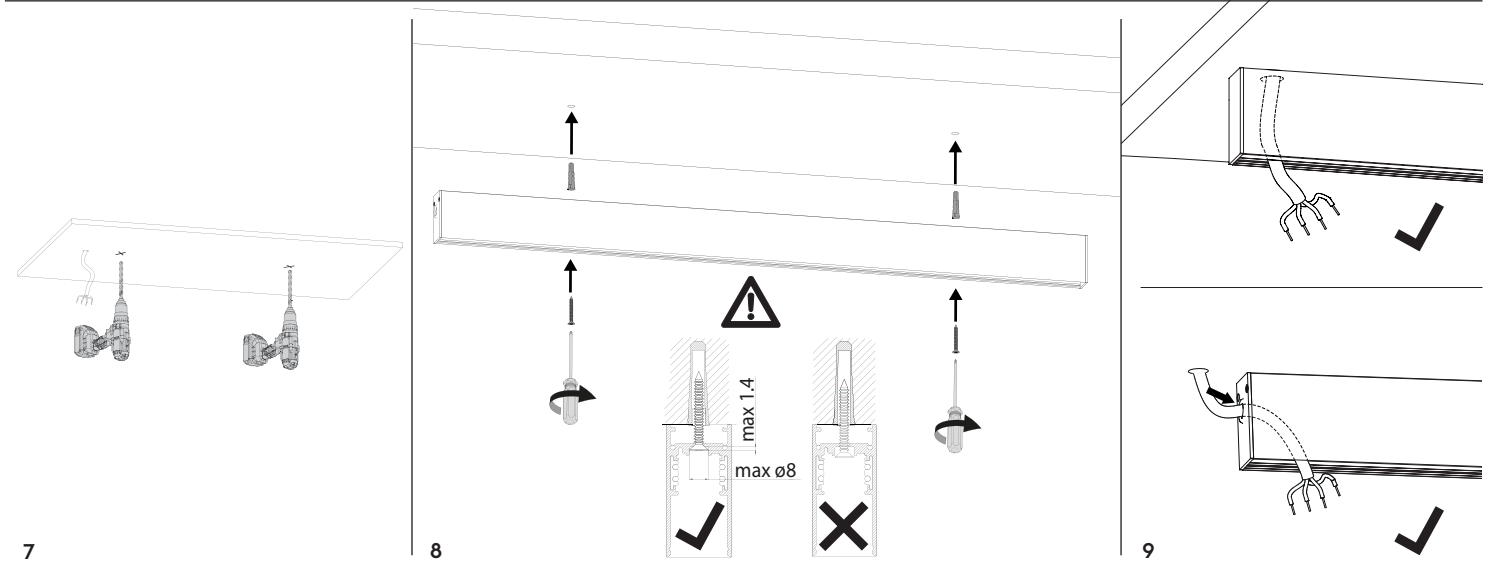
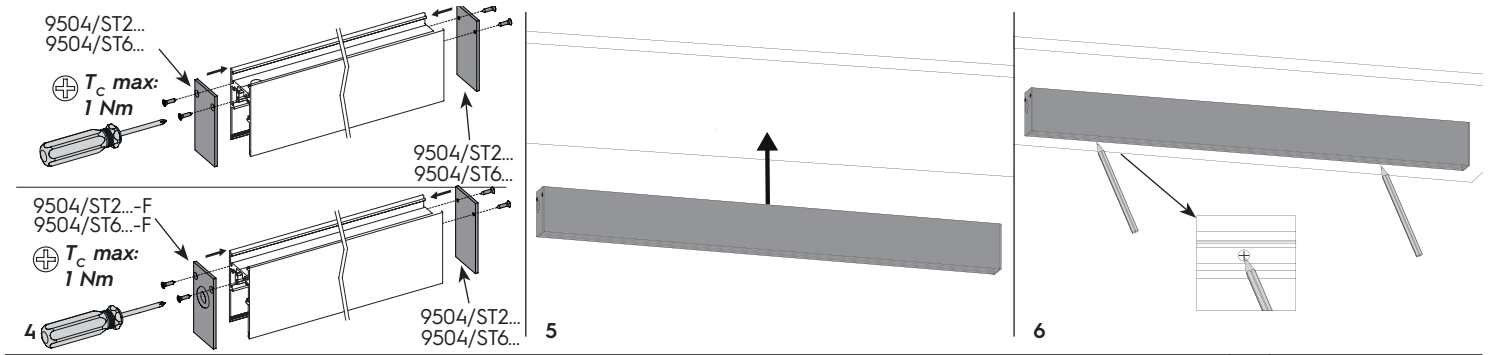
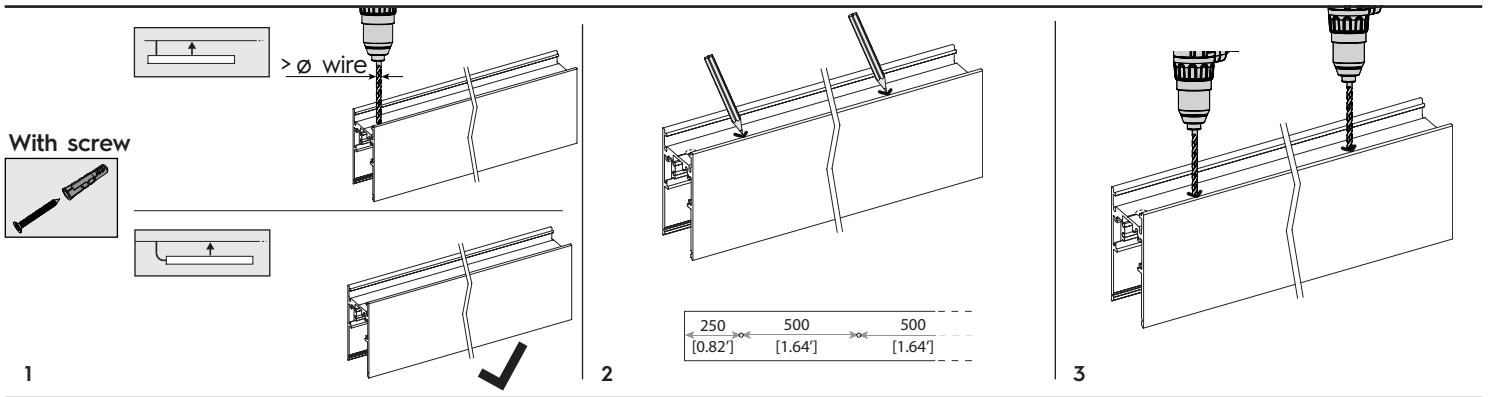
7

8

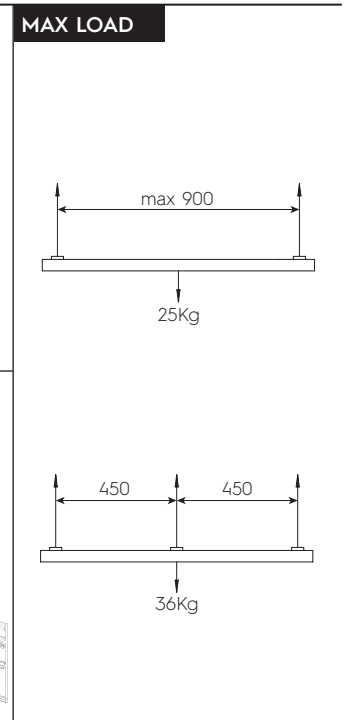
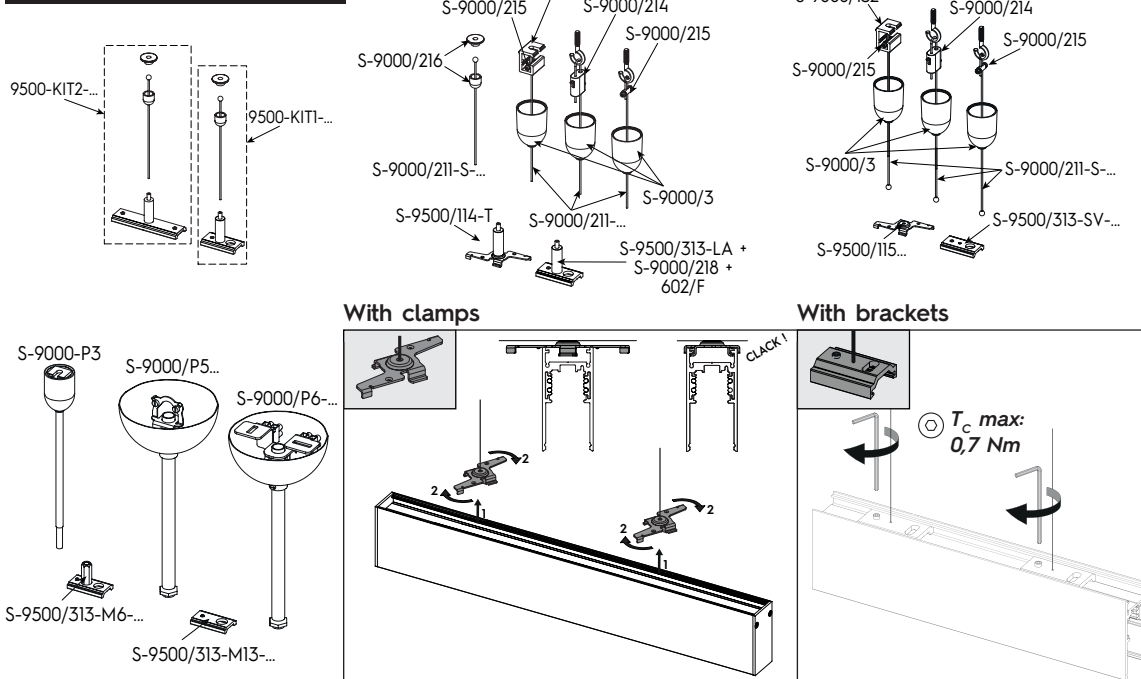
CLACK! 2

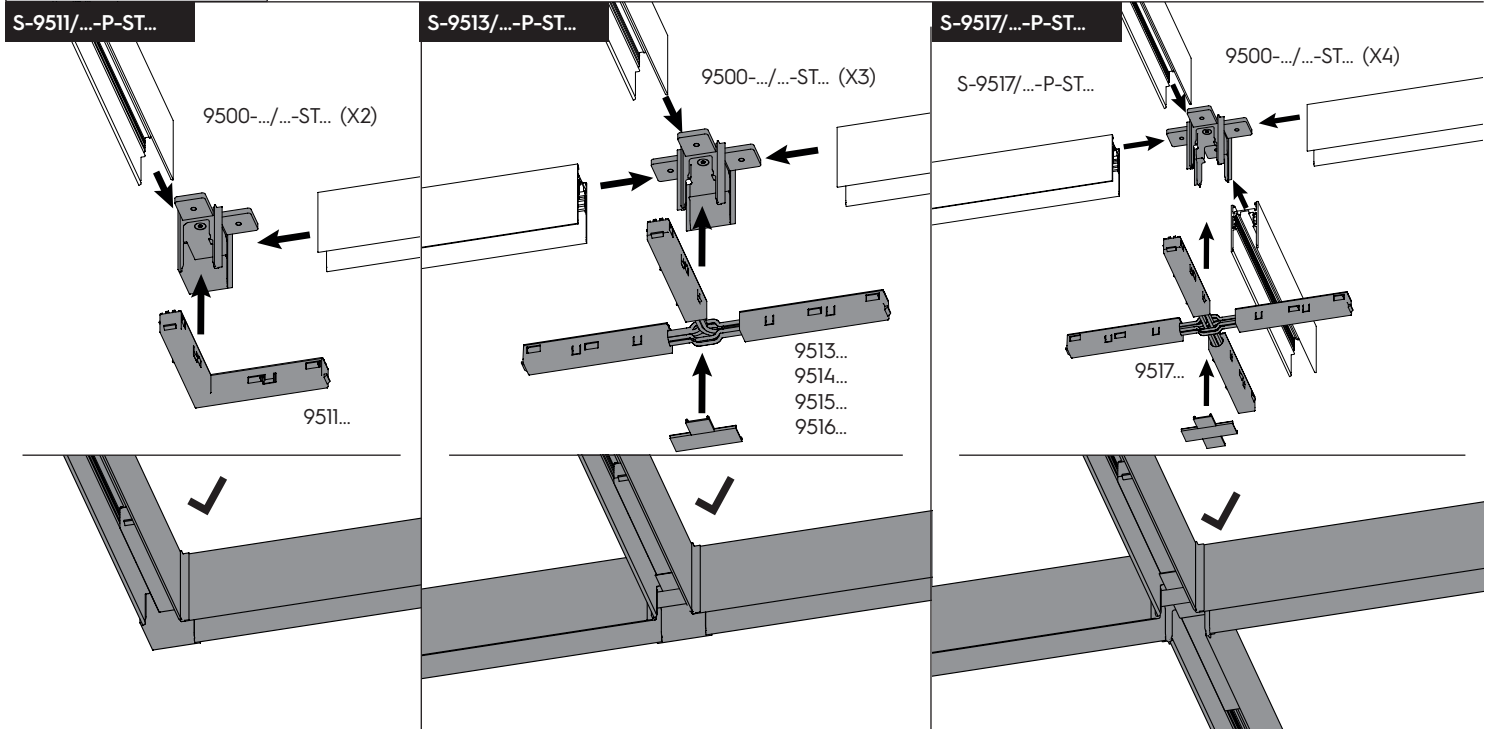
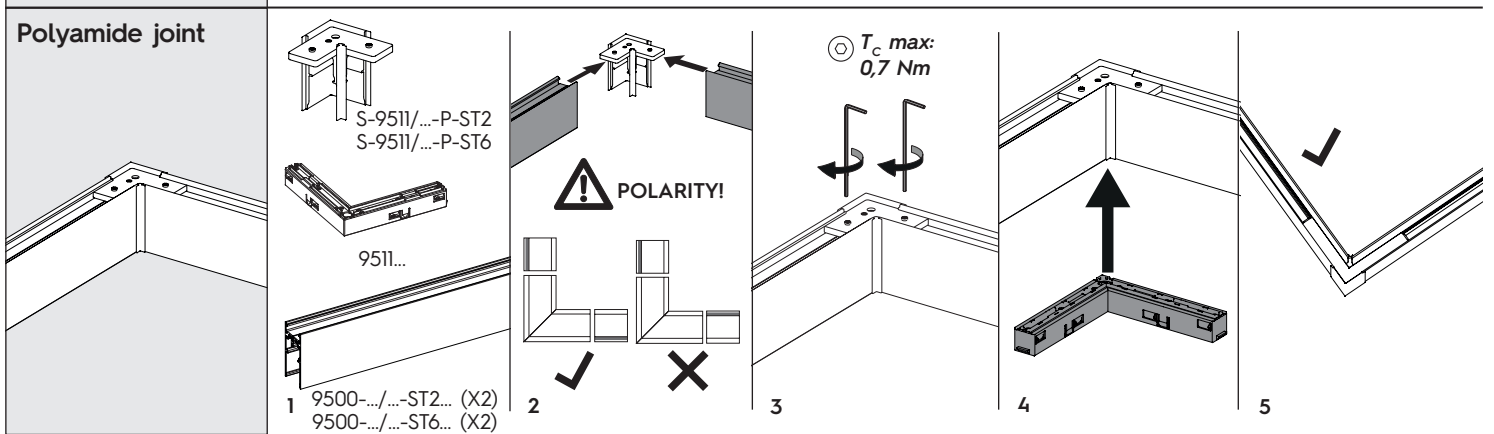
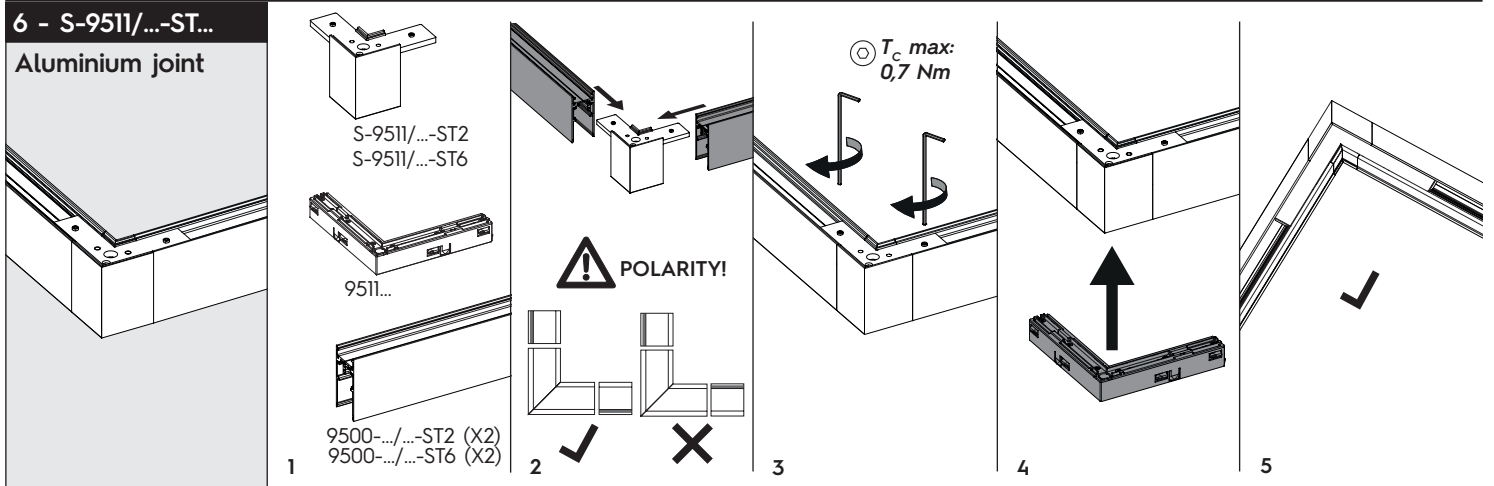
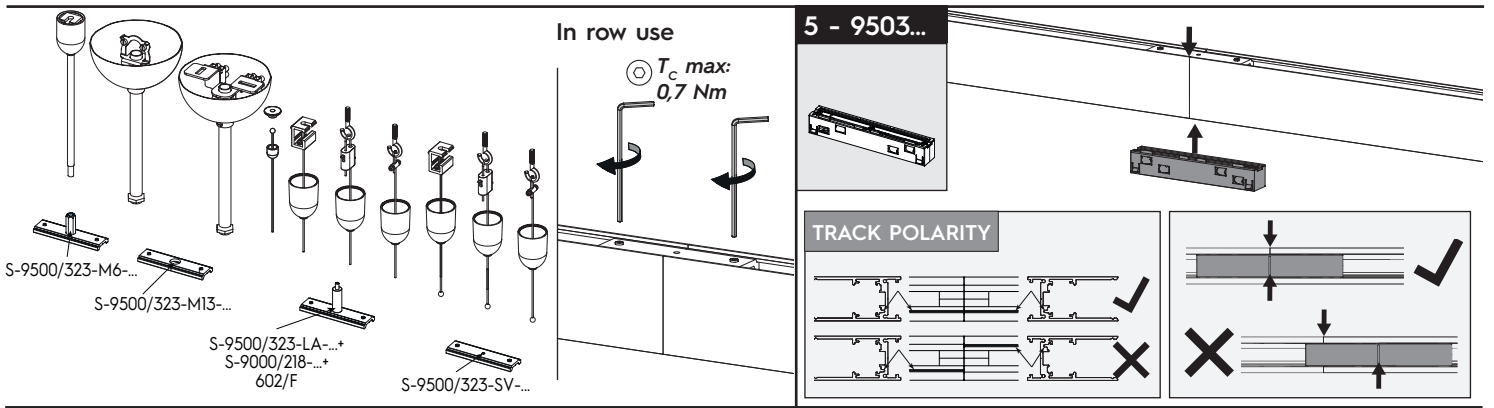
CLACK! 2

1

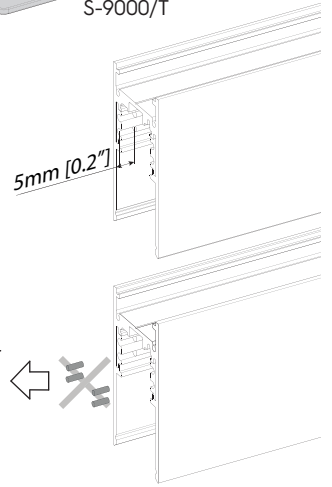
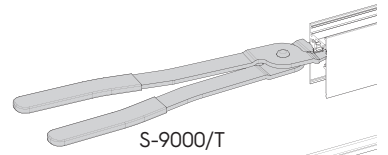
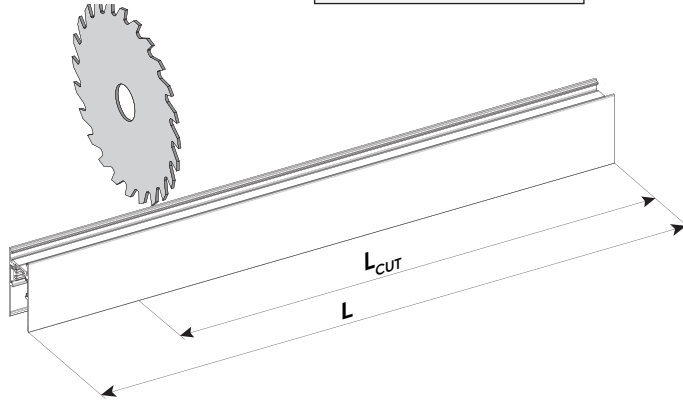
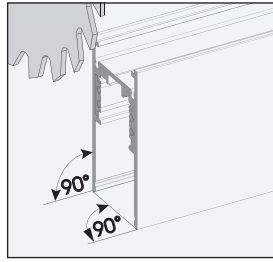
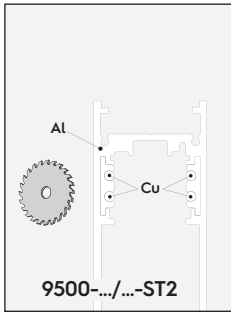


#### 4 - SUSPENDED FIXING



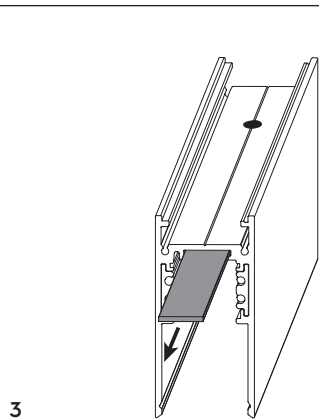


# 7 - CUTTING

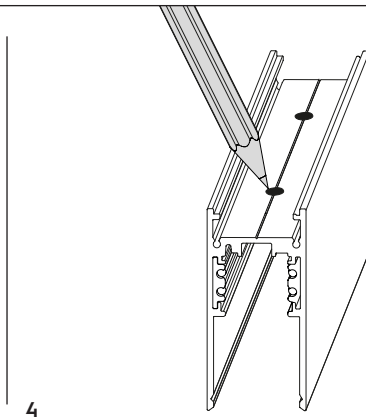


1

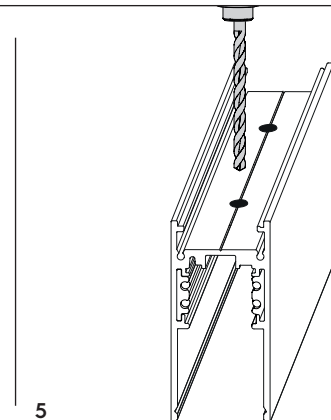
2



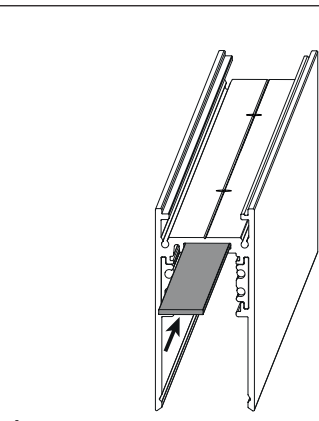
3



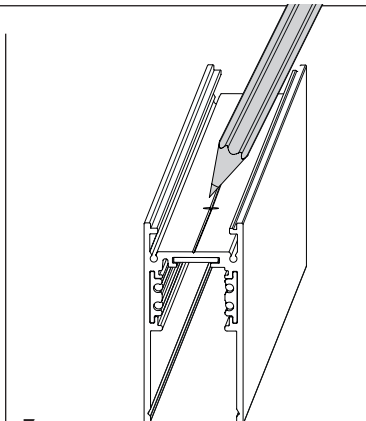
4



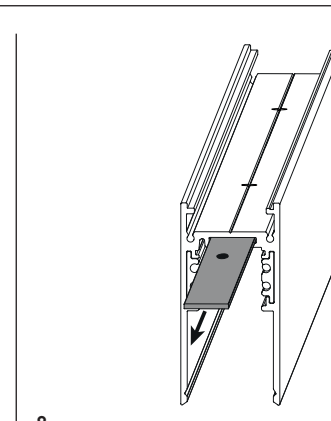
5



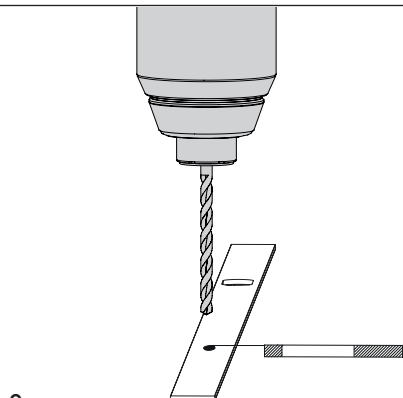
6



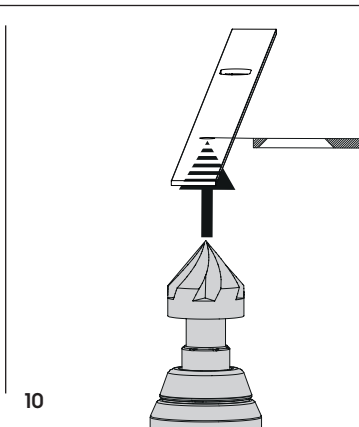
7



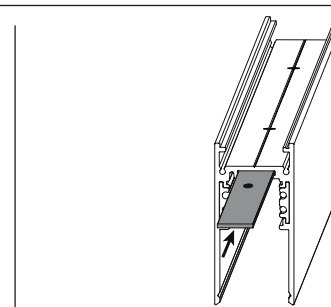
8



9



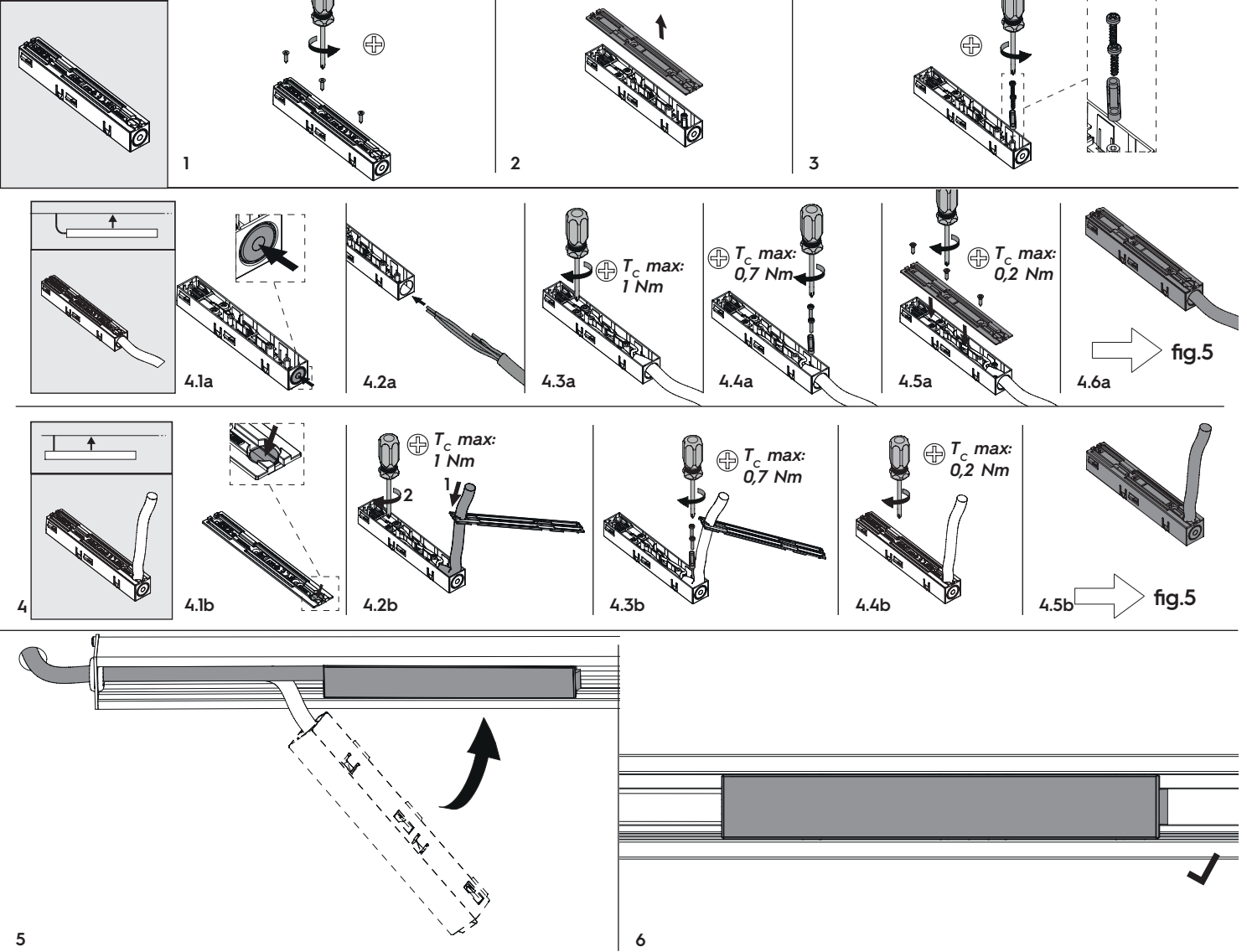
10



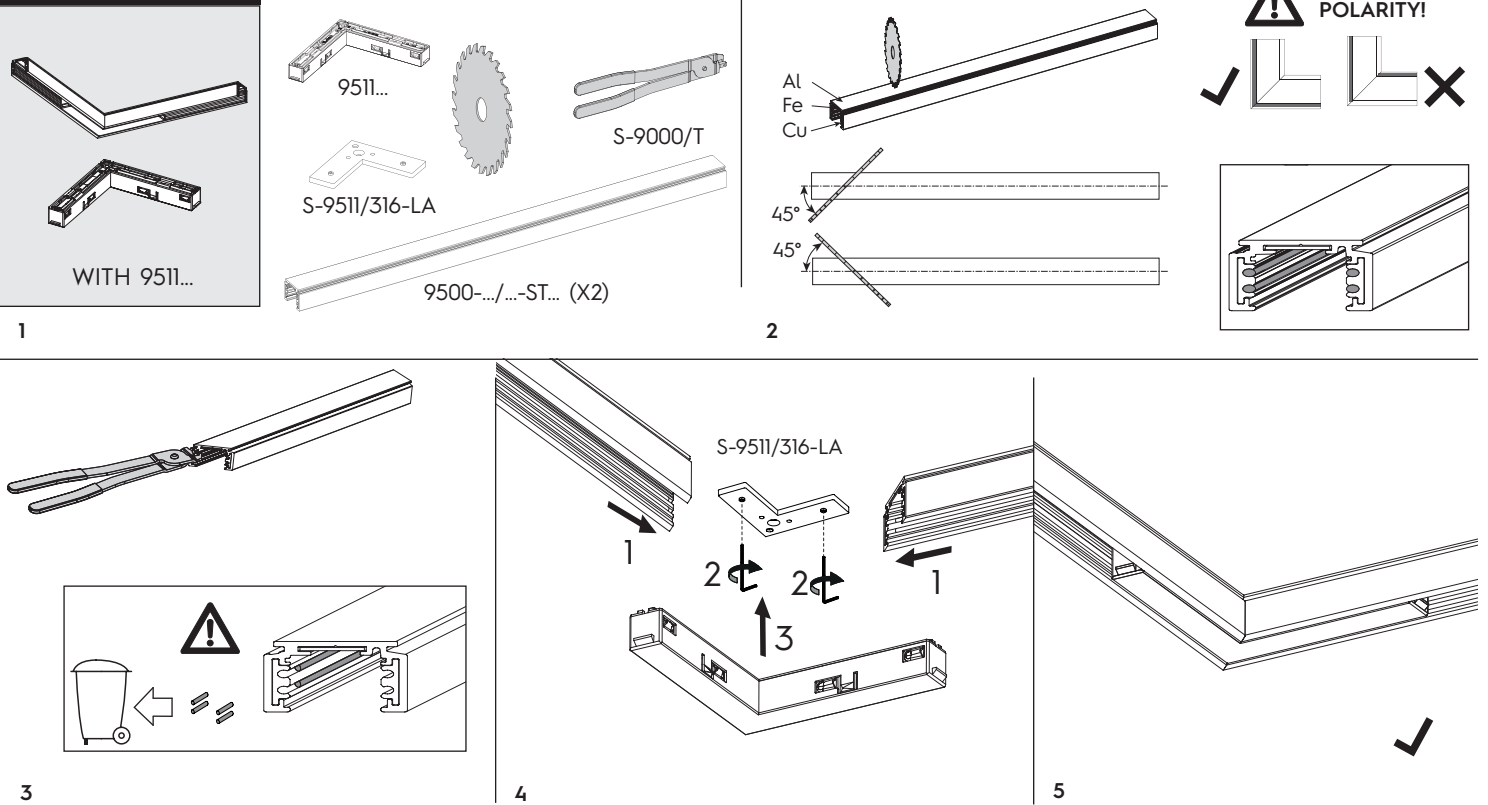
11

→ 3 CEILING FIXING  
With S-9500/114: fig. 2  
With screw: fig. 4

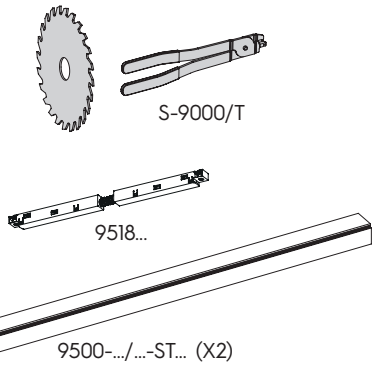
8 - 9501-S/...-E



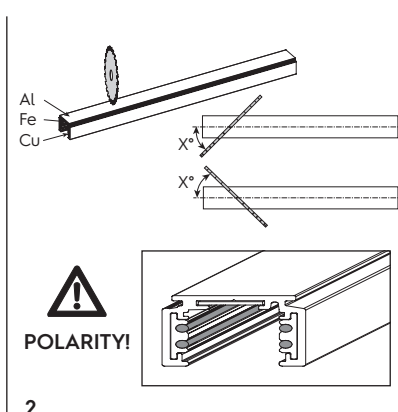
9 - 90° ANGLE



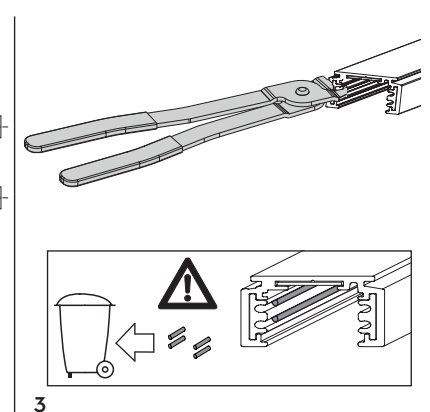
10 - ≠ 90° ANGLE



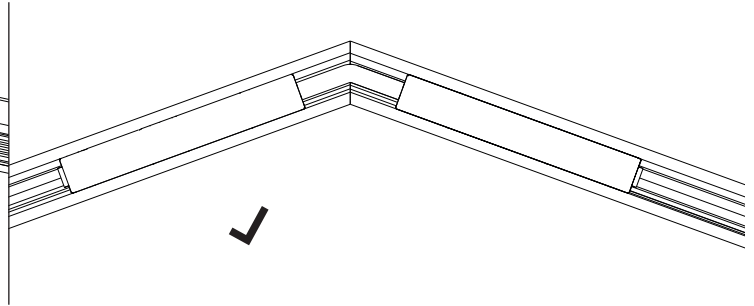
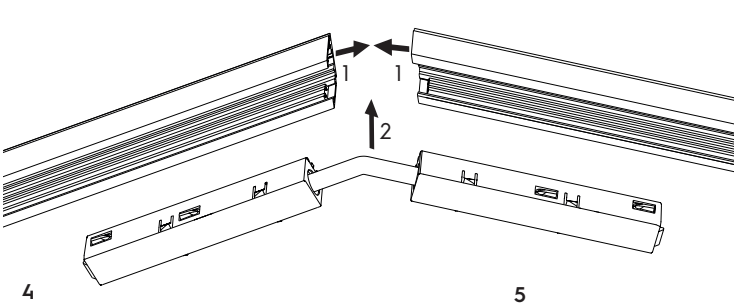
1



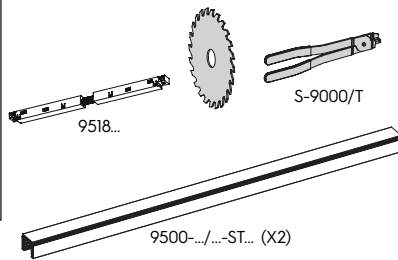
2



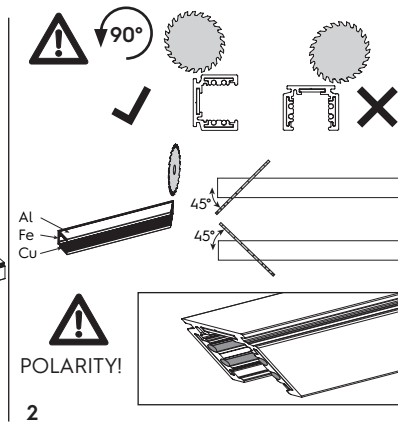
3



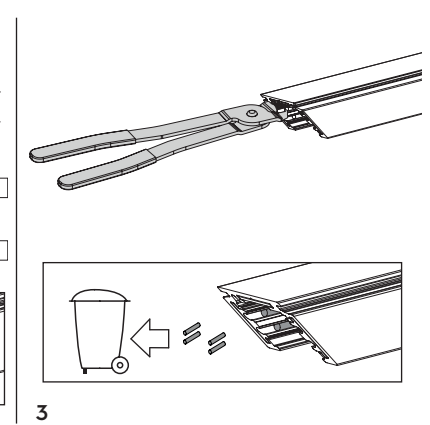
10 - WALL CEILING 90° ANGLE



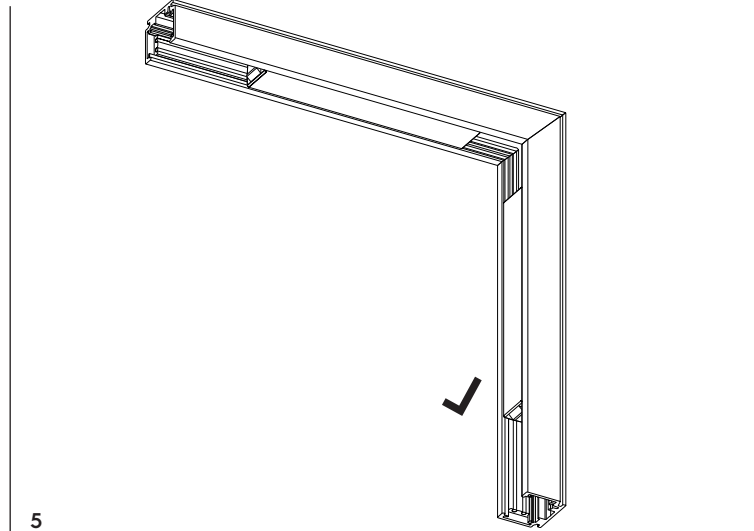
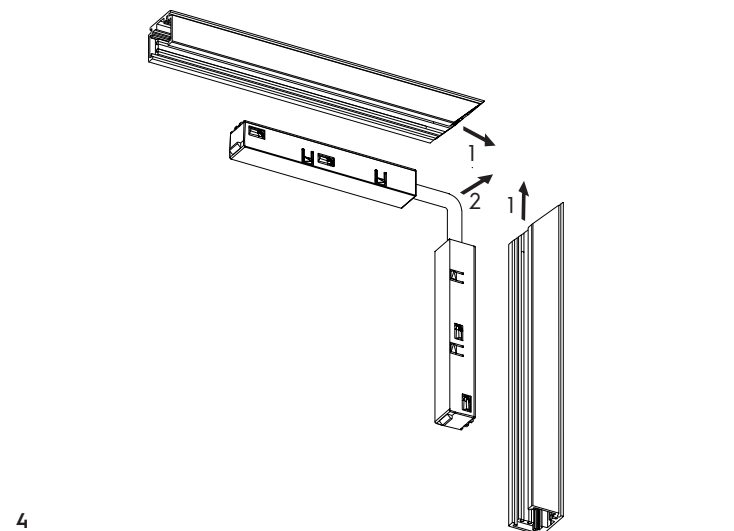
1



2



3



5