

# KOMPO SYS TEM

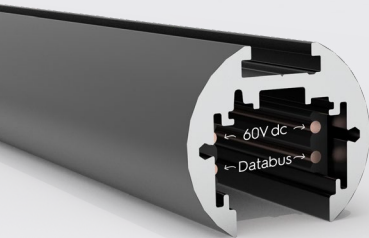
# KOMPO

KOMPO is a modular structure developed to create dynamic and multi-level lighting projects with low voltage tracks.

The system is based on **electrical multilevel connection joints** which easily link low voltage (MULTISYSTEM EVO ST15) tracks both horizontal and vertical and on two different high levels.

This creates **3D multilevel structures made of tracks**, on which it is possible to place spotlights, linear light modules and indirect light depending on the needs. KOMPO structures are suitable to be used ceiling fixed or suspended in different lighting applications, from retail to residential and hospitality.

## Tech info



### EVO ST15 track:

2 circuits: 2x +/- 15A/0-60V dc  
1 circuit + Data Bus: +/- 15A/0-60V + D+/D-

### Materials:

External extruded body in aluminium  
Available colours: black embossed / white embossed  
Insulated extruded body in PVC  
Copper conductors

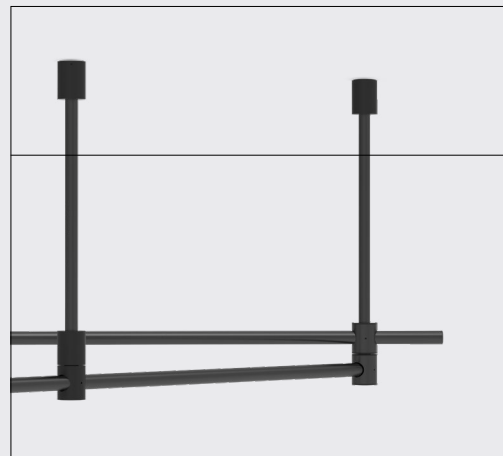


### Kits material:

Aluminium body  
Available colours: black embossed



Wall/Ceiling fixing - Composition detail



Suspended fixing - Composition detail

## KOMPO ceiling kits

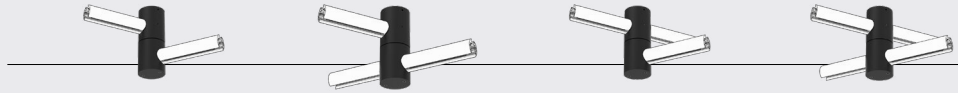
Discover all



Single track

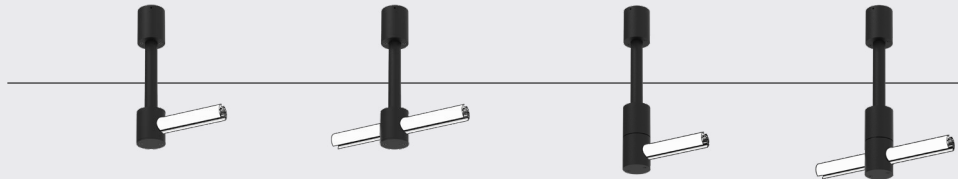


Double track

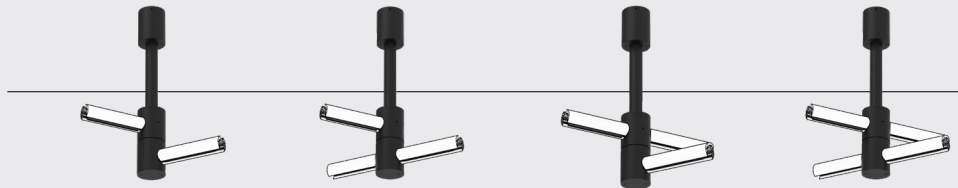


## KOMPO suspension kits with stem

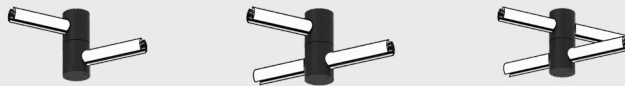
Single track



Double track



## KOMPO middle kits





## KOMPO

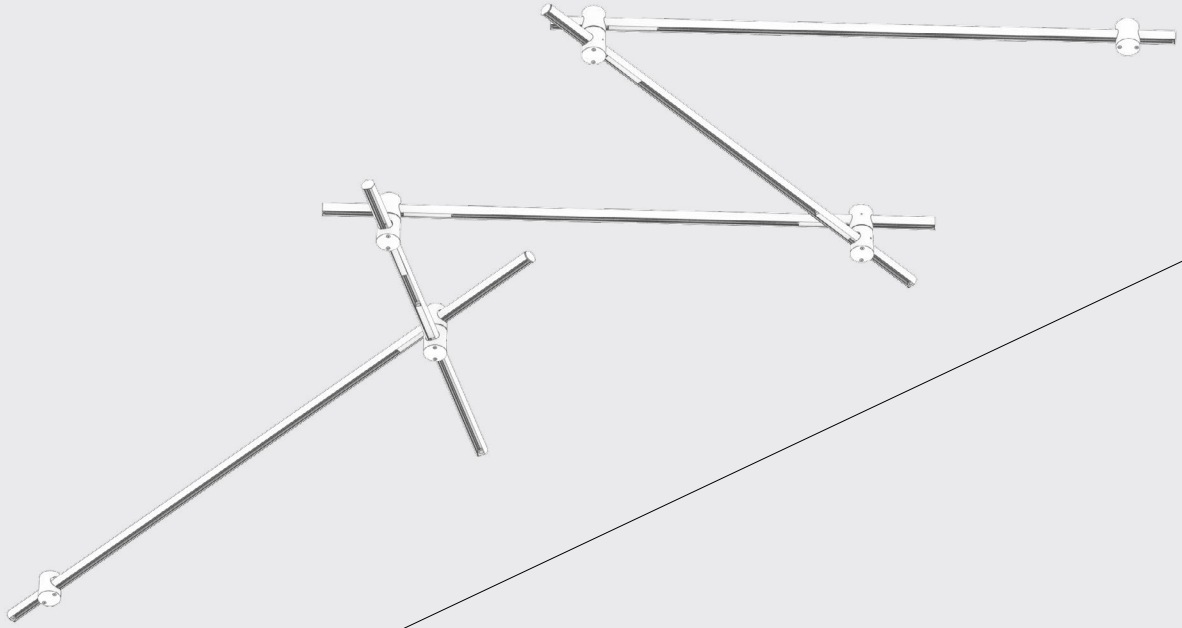
- 1 - SENZAFINE TWIST T30
- 2 - SENZAFINE TWIST CROSS T30C
- 3 - SENZAFINE FLAT M16 OPAL
- 4 - SENZAFINE FLAT M16 UGR
- 5 - SENZAFINE FLAT M16 LENS

## Wall composition



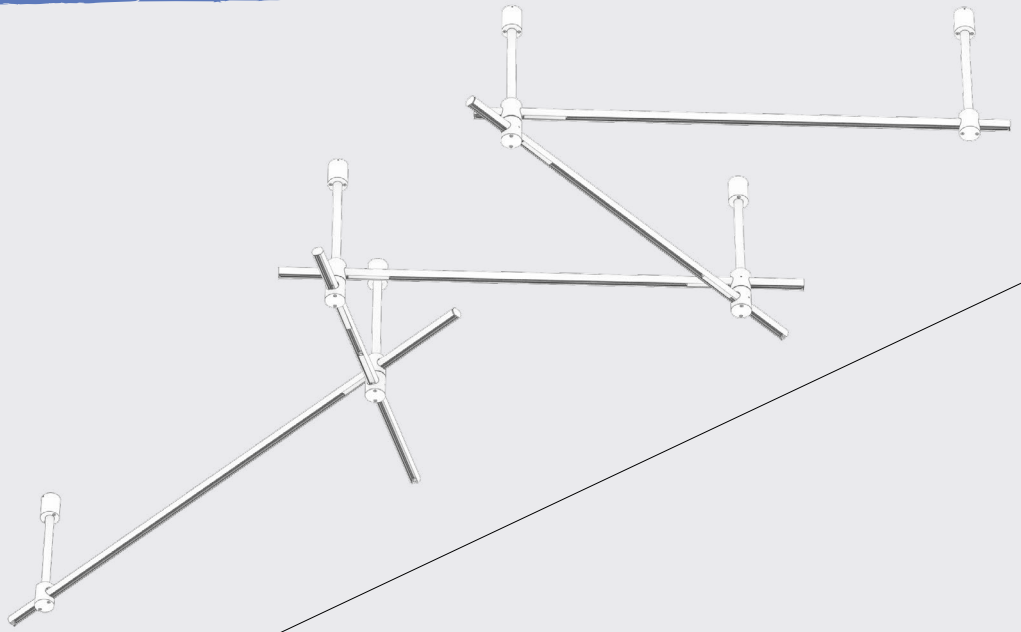
Kompo with SENZAFINE FLAT opal and flexible light

## Ceiling composition



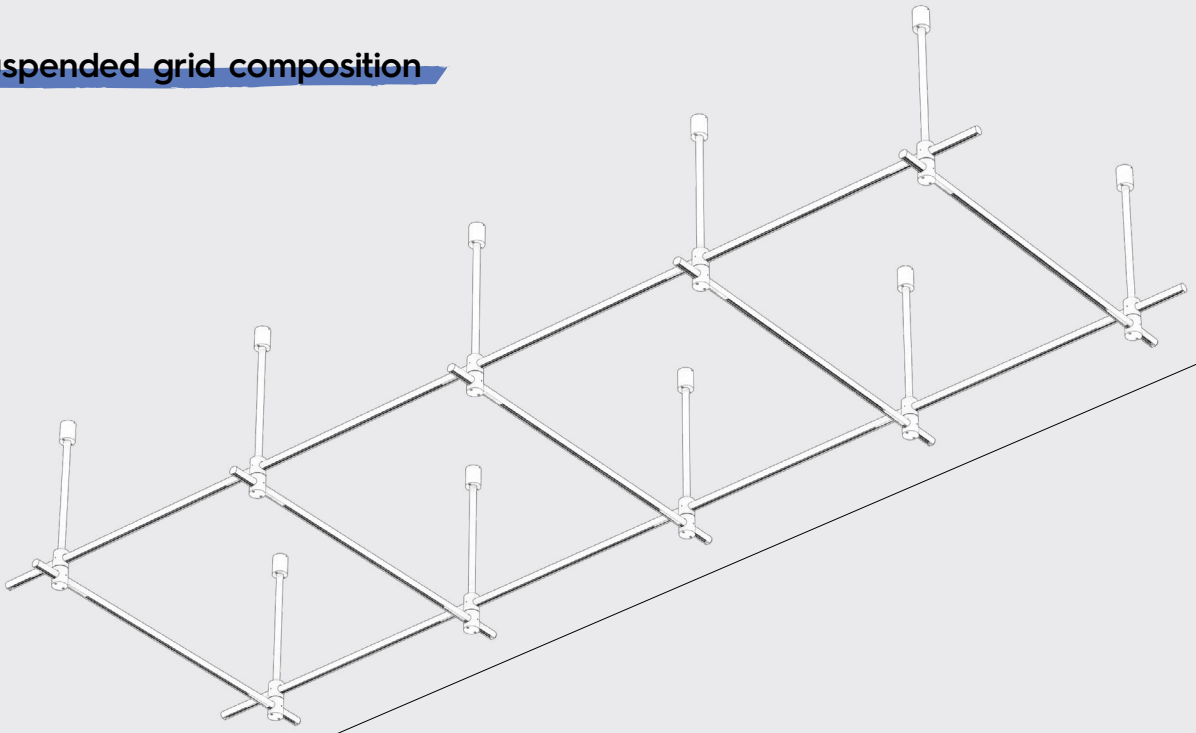
Kompo with SENZAFINE Twist

## Suspended open composition



Kompo with SENZAFINE Twist

## Suspended grid composition



Kompo with SENZAFINE FLAT UGR, suspensions and spotlights