



# SERIES 1010 - OPEN SNAP-ACTION SWITCHES

TO 6 (2) A 250 V AC



## PRODUCT FEATURES

- Powerful snap-action switch with C-spring contact system according to design DIN 41635C
- High switching reliability due to large contact forces directly after switching
- Small size, large travel and difference travel
- Short bounce time
- Contact system insensitive to vibrations

## ON REQUEST

- Extended overtravel
- Special base forms
- Special actuating cams
- In addition to a wide range of normally closed contacts, normally open contacts and changeover switches and spring sets without snap function (basic type 1017) are available

Design	DIN 41635 C
Contact resistance (new condition)	< 100 mOhm (1 A 12 V DC)
Insulation resistance (new condition)	> 100 MOhm (500 V DC)
Proof tracking	250 PTI
Protection type	IP 00
Ambient temperature	-20 °C ... +85 °C ... 120 °C (basic type 1014)
Flammability	UL 94 V-2 or UL 94 HB
Glow wire test temperature	850 °C
Material actuator housing terminals	spring steel / PA glass fiber-reinforced / PA / metal (only 1017.0153) PA glass fiber-reinforced / PA silver plated
Bounce time	< 5 ms
Approval marks	

Suitable for appliances of protection class II under compliance with the installation conditions required on the equipment side

ROCKER SWITCHES  
 PUSHBUTTON SWITCHES  
 TOGGLE SWITCHES  
 SLIDE SWITCHES  
 ROTARY SWITCHES  
 FOOT SWITCHES  
 TACT AND KEY SWITCHES  
 SNAP-ACTION SWITCHES  
 MICRO-SIGNAL SWITCHES  
 SENSORS  
 ECO  
 PUSH IN DRIVE



# SERIES 1010 - OPEN SNAP-ACTION SWITCHES

TO 6 (2) A 250 V AC

	6 (2) A 250 V AC 25E3	2 (0.5) A 250 V AC 20E4	2 (0.5) A 250 V AC 5E4	2 A 12 V DC 10E4	1 A 24 V DC 10E4	0.5 A 15 V 5E4	0.1 A 24 V DC 5E4	30 mA 12 V 5E4	Terminal type	Terminal description	Contact material	Operating force (N)	Operating position (OP) (mm)	Difference travel max. (mm)	Free position (FP) max. (mm)	Permissible total travel position (TP) (mm)	Actuator description	Mechanical life endurance	Miscellaneous	Stock version
<b>Normally closed contact (SPNC)</b>																				
1010.7601		o								9.5 long	Ag	0.25 - 0.6	2.2 ±0.6	0.9	0.4	3.5		1E6		
<b>Normally open contact (SPNO)</b>																				
1010.7401		o								9.5 long	Ag	0.25 - 0.6	2.2 ±0.6	0.9	0.4	3.5		1E6		
1010.7402		o								9.5 long	Ag	0.45 - 1.05	2.2 ±0.6	0.9	0.4	3.5		1E6		
1017.0801						o				9.2 long	CuBe silver plated	0.15 - 0.5	2.2 ±0.6		0	3.2		1E6	without approval mark	o
1017.5701						o					CuSn silver plated	0.15 - 0.5	1.4 ±0.6		3.6	0.4		1E6	without approval mark	
1017.0851							o			9.2 long	Au	0.15 - 0.5	2.2 ±0.6		0	3.2		1E6	without approval mark	
<b>Changeover switch (SPDT momentary)</b>																				
1010.9705	o	o									Au	0.45 - 1.05	3.8 ±0.6	0.9	6.6	2		10E4		
1010.9752	o	o									Ag	0.45 - 1.05	6.9 ±0.6	0.9	9.7	5.1		10E4		
1010.9802	o	o									Ag	0.45 - 1.05	3.8 ±0.6	0.9	6.6	2		10E4		
1010.9852	o	o									Ag	0.45 - 1.05	6.9 ±0.6	0.9	9.7	5.1		10E4		o
1010.0101		o								6.5 long	Ag	0.25 - 0.6	2.2 ±0.6	0.9	0.4	3.5		1E6	without approval mark	o
1010.3001		o								6.5 long	Ag	0.25 - 0.6	0.9 ±0.6	0.9	3.6	0.2		1E6		
1010.4402		o								straight	Ag	0.25 - 0.6	1.3 ±0.6	0.9	4.1	0		1E6	small base without approval mark	
1010.0304		o								9.5 long	Ag	0.25 - 0.6	2.2 ±0.6	0.9	0.4	3.5		1E6		
1010.2003		o								9.5 long	Au	0.45 - 1.05	2.2 ±0.6	0.9	0.4	3.5		1E6		
1010.4103		o								straight	Au	0.25 - 0.6	2.2 ±0.6	0.9	0.4	3.5		1E6	without approval mark	o
1010.6002		o								standing	Au	0.45 - 1.05	11.2 ±0.6	0.9	13.8	9.9		1E6		o
1010.6003		o								standing	Ag	0.25 - 0.6	11.2 ±0.6	0.9	13.8	9.9		1E6		o
1010.7102		o								6.5 long	Ag	0.45 - 1.05	2.2 ±0.6	0.9	0.4	3.5		1E6	without approval mark	
1010.7172		o								6.5 long	Au	0.45 - 1.05	0.9 ±0.6	0.9	3.6	0.2		1E6	without approval mark	
1010.7352		o								9.5 long	Ag	0.45 - 1.05	0.9 ±0.6	0.9	3.6	0.2		1E6		
1010.8102		o								straight	Ag	0.45 - 1.05	2.2 ±0.6	0.9	0.4	3.5		1E6	without approval mark	
1014.6151			o	o						standing	Au	0.3 - 0.8	6.6 ±0.5	0.6	8.6	5.3		50E4	without approval mark	
<b>Changeover switch with OFF position in the center (SPDT momentary - Center OFF)</b>																				
1017.0153						o				9.2 long	Au		≤ 2.1		0	0.5		1E6	without approval mark operating range max. 4.2	

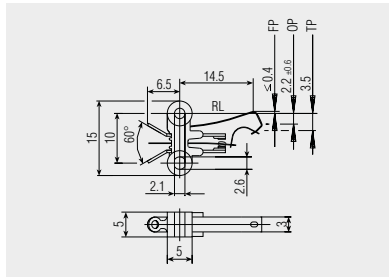


# SERIES 1010 - OPEN SNAP-ACTION SWITCHES

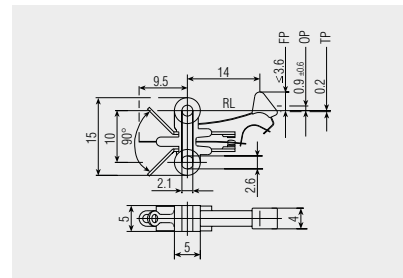
TO 6 (2) A 250 V AC



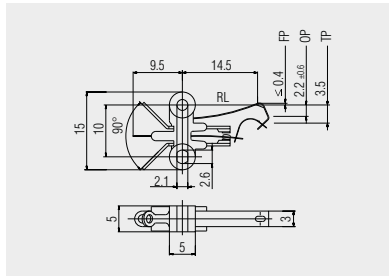
Basic type 1010



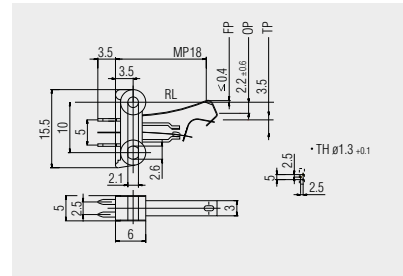
Solder terminal  
30° angled



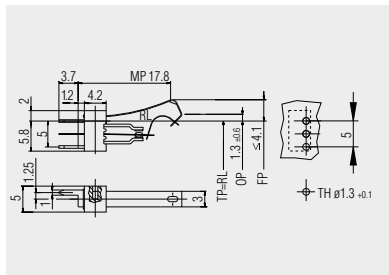
Solder terminal  
45° angled



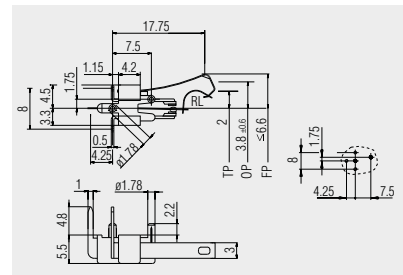
Solder terminal  
45° angled



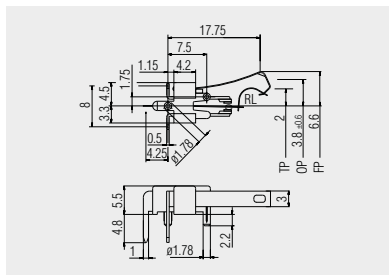
PCB terminal  
straight



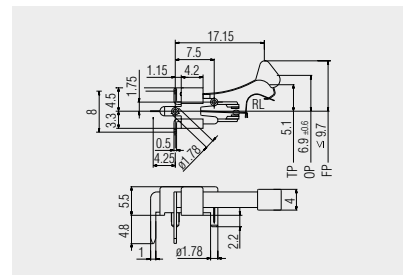
PCB terminal  
straight



PCB terminal  
left angled



PCB terminal  
right angled  
1010.9802



PCB terminal  
right angled  
1010.9852

ROCKER SWITCHES  
 PUSHBUTTON SWITCHES  
 TOGGLE SWITCHES  
 SLIDE SWITCHES  
 ROTARY SWITCHES  
 FOOT SWITCHES  
 TACT AND KEY SWITCHES  
 SNAP-ACTION SWITCHES  
 MICRO-SIGNAL SWITCHES  
 SENSORS  
 ECO  
 PUSH IN DRIVE

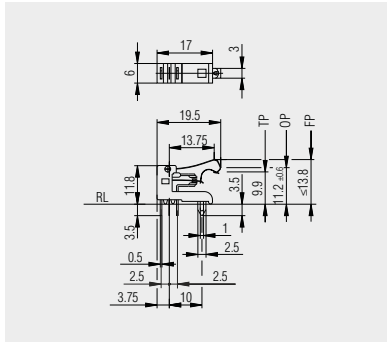


# SERIES 1010 - OPEN SNAP-ACTION SWITCHES

TO 6 (2) A 250 V AC



Basic type 1010

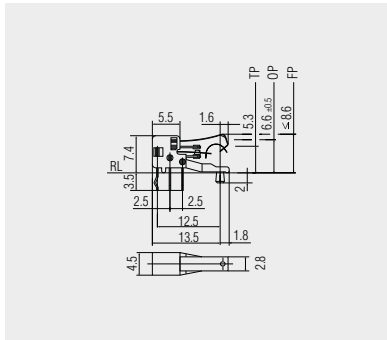


PCB terminal vertical:

A switch actuation vertical to the PCB can be implemented in a confined space with this version.



Basic type 1014



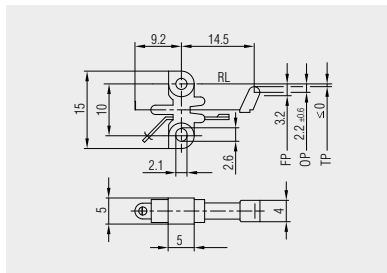
Vertical PCB terminal:

According to the same functional principle as basic type 1010, but in smaller size.

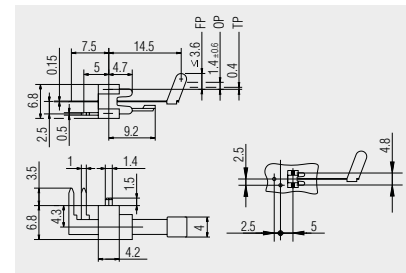
This basic type is designed for low voltages and has no approval mark.



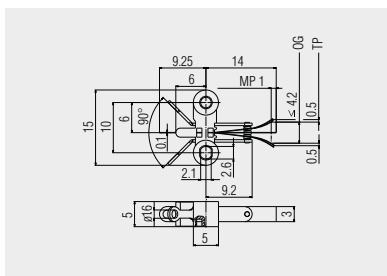
Basic type 1017 without snap function



Solder terminal normally open contact version



PCB terminal left angled



Changeover switch with OFF position in the center

ROCKER SWITCHES

PUSHBUTTON SWITCHES

TOGGLE SWITCHES

SLIDE SWITCHES

ROTARY SWITCHES

FOOT SWITCHES

TACT AND KEY SWITCHES

SNAP-ACTION SWITCHES

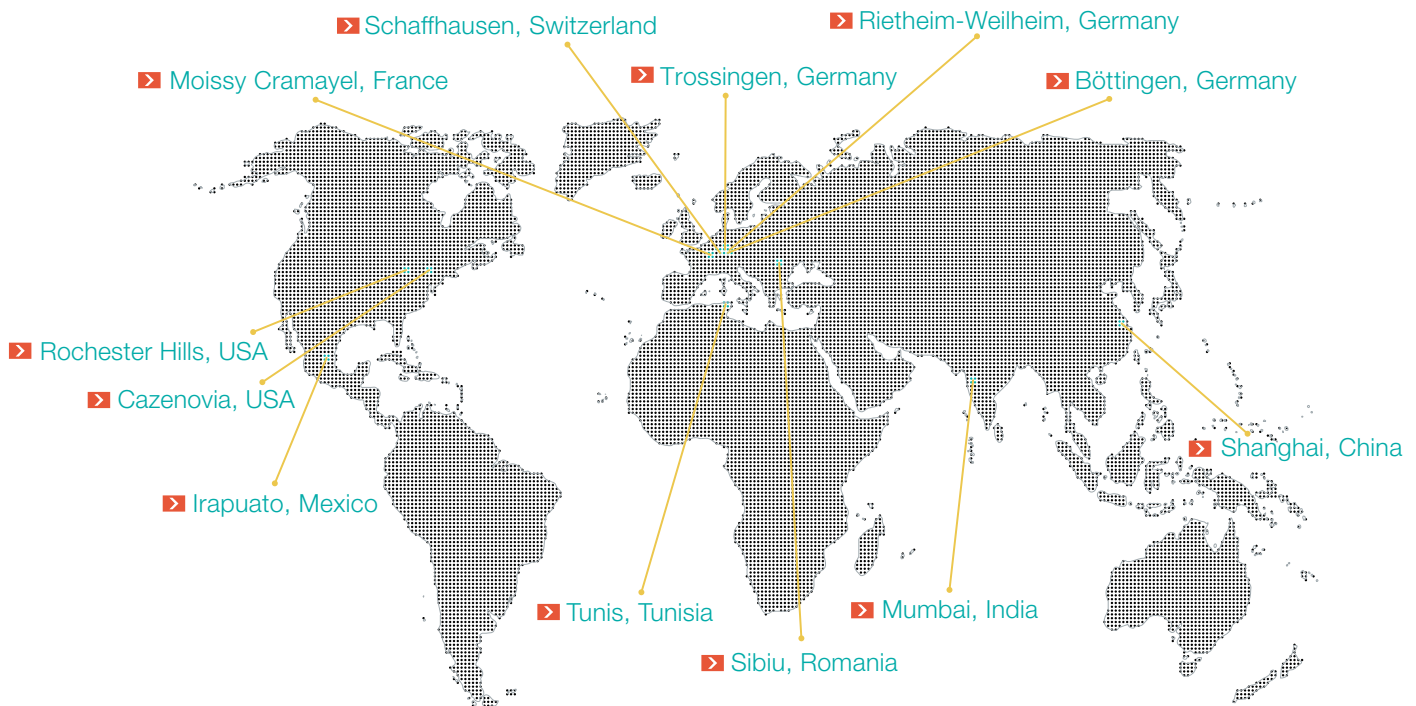
MICRO-SIGNAL SWITCHES

SENSORS

ECO

PUSH'DRIVE

# MARQUARDT INTERNATIONAL.



## HEADQUARTERS

### Marquardt Mechatronik GmbH

Schloss-Straße 16  
78604 Rietheim-Weilheim / GERMANY  
Tel. +49 (0)74 24/99-0  
Fax +31 (0)74 24/99-2399  
marquardt@marquardt.com  
[www.marquardt.com](http://www.marquardt.com)



## DISTRIBUTOR

### GEUKEN B.V.

Wattstraat 25a  
2723 RA Zoetermeer / NETHERLANDS  
Tel. +31 (0)79 361 60 70  
Fax +31 (0)79 361 40 90  
info@geuken.nl  
[www.geuken.nl](http://www.geuken.nl)