



Features

- Visual rotating signalling device with powerful 20W halogen bulb and triple lens optical system for use in explosion endangered areas of zone 1 and 2
- Wear resistant friction gear
- Modular system – synthetic housing made of glass fibre reinforced polyester
- Lower weight – robust and corrosion proof design
- Flameproof chamber „d“ - terminal connection chamber in protection class increased safety „e“
- For continuous operation
- 4 lens colours
- Insulation class II – no equipotential bonding required

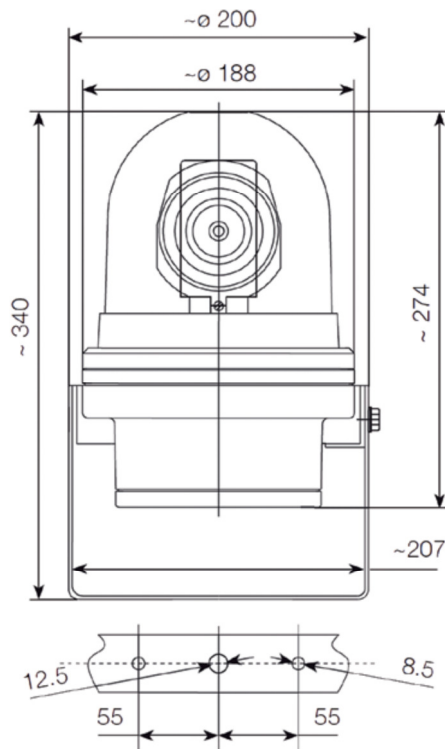
Approvals

- ATEX certificate: PTB 02 ATEX 1098
EN 60079-0 : 2006, EN 60079-1 : 2007, EN 60079-7 : 2007,
EN 61241-0 : 2009, EN 61241-1 : 2004

Technical data

Type	dHR
Ingress protection	IP66
Temperature range	-20° to +75°C
Light source	halogen bulb 20W
Housing, colour	glass fibre reinforced polyester, black RAL 9005
Lens	polycarbonate (makrolon)
Colours (inner lens)	amber, red, blue, green
Terminal	1,5mm ² fine wire; 2,5mm ² single wire
Optics	triple lens optical system (fresnel lens)
Rotation speed	~ 60 rds/min
Cable entry	Cable gland M20x1,5 Blind plug M20x1,5
Operation	Continuous
Insulation class	II no equipotential bonding required
Weight	5,5kg

dHR Ex-Proof Rotating Signal Beacon



Order data

Type	Order nr.	Classification	Denomination	Nominal voltage	Voltage range	Nominal current
dHR1	350 00[c] 405	1	Ex-proof LED signal beacon with protection cage	24Vac/dc	+/-10%	0,90A
	350 21[c] 410			110/120Vac 50-60Hz		0,20A
	350 00[c] 413			230/240Vac 50-60Hz		0,10A
dHR2	350 00[c] 004	1	Ex-proof LED signal beacon with protection cage	12Vdc	+/-10%	1,70A

Zone 1,2

¹ II 2G Ex de IIC T5/T6

-20°C ≤ Ta. ≤ +75°C/+40°C

[c] Colour code for lens

Code	Colour	Code	Colour
1	Amber	6	Green
2	Red		
5	Blue		

