



SERIES 1941 - SINGLE-POLE ROCKER SWITCHES IP 50

TO 12 (8) A 250 V AC 1E4



PRODUCT FEATURES

- Single-pole rocker switch
- High dust protection with IP 50
- 100 million times proven switching principle
- Appliance cut-out same as basic type 1801

ON REQUEST

- Other colors
- Other printing variants
- Other terminal variants
- PVC - protection cap
- With approval mark

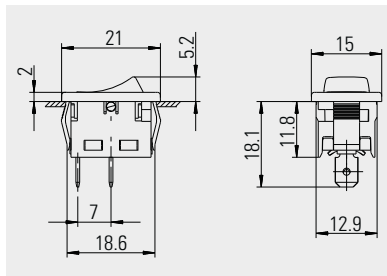
Mechanical life endurance	1E5 5E4 (normally open contact)
Contact resistance (new condition)	< 100 mOhm (1 A 12 V DC)
Insulation resistance (new condition)	> 100 MOhm (500 V DC)
Proof tracking	250 PTI
Protection type	IP 40
Ambient temperature	terminal side -20 °C ... +100 °C ... +125 °C (product-dependent) actuating side -20 °C ... +55 °C
Flammability	UL 94 V-2
Glow wire test temperature	850 °C
Material actuator housing	PA PA / PA glass fiber-reinforced
Plug force of the terminals	≤ 80 N
Suitable for appliances of protection class II	



SERIES 1941 - SINGLE-POLE ROCKER SWITCHES IP 50

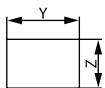
TO 12 (8) A 250 V AC 1E4

single-pole	Actuator color / printing				Terminal type	Terminal description	Contact distance (mm)	Contact material	Inrush current (capacitive) (A)	Miscellaneous	Stock version
	12 (8) A 250 V AC 1E4	8 (8) A 250 V AC 5E4	6 (4) A 250 V AC 5E4	6 (2) A 250 V AC 5E4							
ON / OFF switch (SPST)											
1941.1102						4.8	≥ 3	Ag	50	without approval mark	
1941.1103						4.8	≥ 3	Ag	50	0 at On-position	
1941.1105						4.8	≥ 3	Ag	50		
Normally open contact (SPNO)											
1941.1203						4.8	≥ 3	Ag		0 at On-position	



Basic type 1941 single-pole

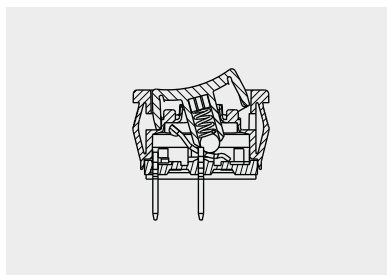
Quick-connect terminal 4.8 x 0.8



X = Wall thickness

x	y	z
0.75 ... 1.25	19.2 ^{-0.1}	12.9 ^{+0.1}
1.25 ... 2	19.4 ^{-0.1}	12.9 ^{+0.1}

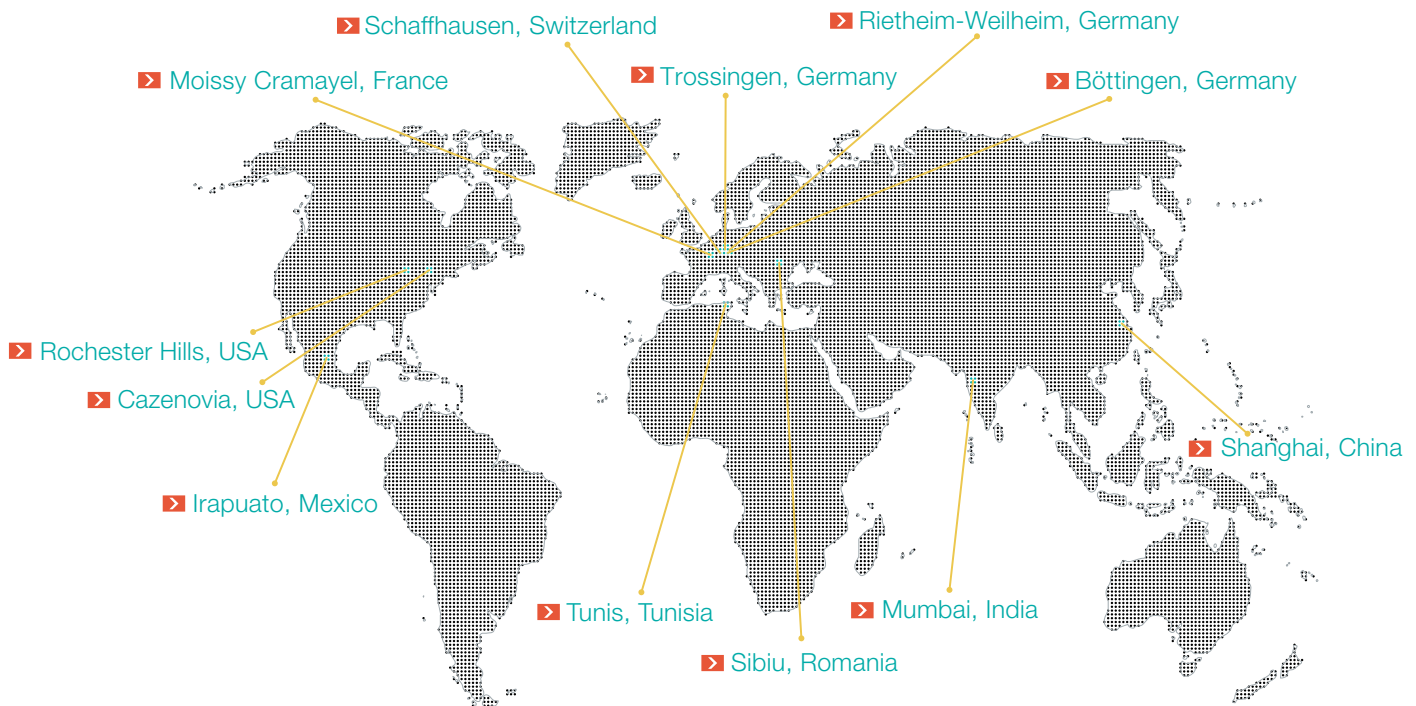
Housing with internal meander and a hole underneath the snap-on mechanism for IP 50. Switching system is dust- and waterproof.



Sectional drawing

ROCKER SWITCHES
PUSHBUTTON SWITCHES
TOGGLE SWITCHES
SLIDE SWITCHES
ROTARY SWITCHES
FOOT SWITCHES
TACT AND KEY SWITCHES
SNAP-ACTION SWITCHES
MICRO-SIGNAL SWITCHES
SENSORS
ECO
PUSH IN DRIVE

MARQUARDT INTERNATIONAL.



HEADQUARTERS

Marquardt Mechatronik GmbH

Schloss-Straße 16
78604 Rietheim-Weilheim / GERMANY
Tel. +49 (0)74 24/99-0
Fax +31 (0)74 24/99-2399
marquardt@marquardt.com
www.marquardt.com

Geuken



DISTRIBUTOR

GEUKEN B.V.

Wattstraat 25a
2723 RA Zoetermeer / NETHERLANDS
Tel. +31 (0)79 361 60 70
Fax +31 (0)79 361 40 90
info@geuken.nl
www.geuken.nl