



# SERIES 1550 - SINGLE AND DOUBLE-POLE ROCKER SWITCHES

TO 16 (4) A 250 V AC



## PRODUCT FEATURES

- Inrush currents (capacitive) up to 100 A
- Two housing variants (with flange or lower lying)
- With mechanical forced opening
- Illuminated window with lens effect

## ON REQUEST



- Other colors
- Other rocker labelings
- Other lamp variants
- Conformity IEC 60065 chap. 14.6
- Special rockers
- Cable assembly

Mechanical life endurance	5E4
Inrush current (capacitive)	100 A
Contact distance	≥ 3 mm
Contact resistance (new condition)	< 100 mOhm (1 A 12 V DC)
Insulation resistance (new condition)	> 100 MOhm (500 V DC)
Proof tracking	250 PTI
Protection type	IP 40
Ambient temperature	terminal side -20 °C ... +100 °C actuating side -20 °C ... +55 °C
Flammability	UL 94 V-2 UL 94 V-0 (product-dependent)
Glow wire test temperature	850 °C
Material actuator housing	PA PA
Plug force of the terminals	≤ 80 N
Approval marks	
Suitable for appliances of protection class II	



# SERIES 1550 - SINGLE AND DOUBLE-POLE ROCKER SWITCHES

TO 16 (4) A 250 V AC



 single-pole 		Lighting voltage (V)	Actuator color / printing	Housing color	7 A 250 V AC 5E4	16 (4) A 250 V AC 5E4	16 (4) A 250 V AC 1E4	10 (4) A 250 V AC 5E4	10 (4) A 250 V AC 25E3	10 A 12 V DC	20 mA 250 V AC 5E4	20 A 250 V AC 2 HP	20 A 125 V AC 1 HP	16 A 250 V AC 2 HP	16 A 125 V AC 1 HP	Terminal type	Terminal description	Contact material	EN 60335 cap. 30 conform "G"	Miscellaneous	Stock version
<b>ON / OFF switch (SPST)</b>																					
1550.3102	230					○	○							○			6.3	Ag			
1550.3609	12								○								6.3	Ag		lower lying flange	
1551.3102						○	○							○	○		6.3	Ag	○		○
1551.3103						○	○							○	○		6.3	Ag			
1551.3106						○	○							○	○		6.3	Ag			
1551.2654										○								Au		approvals KEMA lower lying flange	
<b>Normally closed contact (SPNC)</b>																					
1581.1303					○									○	○		6.3	Ag	○	increased life endurance at a high electrical rating	
1551.1303						○	○							○	○		6.3	Ag			
<b>Normally open contact (SPNO)</b>																					
1551.3202						○	○							○	○		6.3	Ag			○
1551.3702						○	○							○	○		6.3	Ag		lower lying flange	

ROCKER SWITCHES  
PUSHBUTTON SWITCHES  
TOGGLE SWITCHES  
SLIDE SWITCHES  
ROTARY SWITCHES  
FOOT SWITCHES  
TACT AND KEY SWITCHES  
SNAP-ACTION SWITCHES  
MICRO-SIGNAL SWITCHES  
SENSORS  
ECO  
PUSH IN DRIVE



# SERIES 1550 - SINGLE AND DOUBLE-POLE ROCKER SWITCHES

TO 16 (4) A 250 V AC

 double-pole 		Lighting voltage (V)	Actuator color / printing	Housing color	7 A 250 V AC 5E4	16 (4) A 250 V AC 5E4	16 (4) A 250 V AC 1E4	10 (4) A 250 V AC 5E4	10 (4) A 250 V AC 25E3	10 A 12 V DC	20 mA 250 V AC 5E4	20 A 250 V AC 2 HP	20 A 125 V AC 1 HP	16 A 250 V AC 2 HP	16 A 125 V AC 1 HP	Terminal type	Terminal description	Contact material	EN 60335 cap. 30 conform "G"	Miscellaneous	Stock version
ON / OFF switch (DPST)																					
1555.3102	230					○	○					○	○	○			6.3	Ag	○		○
1555.3104	230					○	○							○			6.3	Ag			○
1555.3108	230					○	○							○			6.3	Ag			○
1555.3604	230					○	○							○			6.3	Ag		lower lying flange	
1555.4608	230					○	○							○				Ag		lower lying flange	
1555.8104	230					○	○							○			6.3	Ag		flange dimension 31.5 x 17 mm	
1555.3125	115					○	○					○	○	○			6.3	Ag	○		
1555.3109	110													○			6.3	Ag			
1555.3120	110													○			6.3	Ag			
1555.3111	12								○								6.3	Ag			
1552.0102						○	○							○	○			Ag			○
1552.2601						○	○							○	○			Ag		lower lying flange	
1552.2602						○	○							○	○			Ag	○	lower lying flange	○
1552.3102						○	○							○	○		6.3	Ag			○
1552.3104						○	○							○	○		6.3	Ag			
1552.3112						○	○							○	○		6.3	Ag	○	conformant with EN 60065 par. 14.6	○
1552.3117						○	○					○	○	○	○		6.3	Ag	○		
1552.3602						○	○							○	○		6.3	Ag		lower lying flange	○
1552.4602						○	○							○	○			Ag		lower lying flange	○
1552.4702						○	○							○	○			Ag		2 PCB holders lower lying flange	
1552.4802						○	○							○	○			Ag		lower lying flange	

ROCKER SWITCHES

PUSHBUTTON SWITCHES

TOGGLE SWITCHES

SLIDE SWITCHES

ROTARY SWITCHES

FOOT SWITCHES

TACT AND KEY SWITCHES

SNAP-ACTION SWITCHES

MICRO-SIGNAL SWITCHES

SENSORS

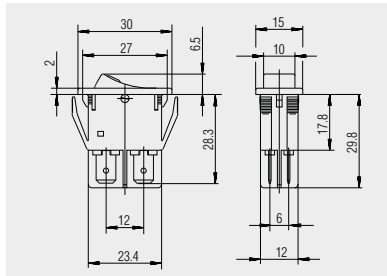
ECO

PUSH/DRIVE



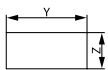
# SERIES 1550 - SINGLE AND DOUBLE-POLE ROCKER SWITCHES

TO 16 (4) A 250 V AC



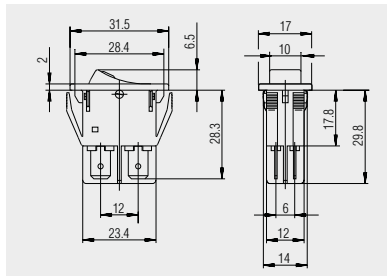
Basic types 1550 and 1555  
single and double-pole

Quick-connect terminal 6.3 x 0.8



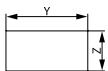
X = Wall thickness

x	y	z
0.8 ... 5.0	27.2 <sup>+0.1</sup>	12.2 <sup>+0.2</sup>



1555.8104  
double-pole

Quick-connect terminal 6.3 x 0.8  
cover frame 31.5 x 17 mm



X = Wall thickness

x	y	z
0.8 ... 5.0	28.6 <sup>+0.1</sup>	14 <sup>+0.2</sup>

ROCKER SWITCHES

PUSHBUTTON SWITCHES

TOGGLE SWITCHES

SLIDE SWITCHES

ROTARY SWITCHES

FOOT SWITCHES

TACT AND KEY SWITCHES

SNAP-ACTION SWITCHES

MICRO-SIGNAL SWITCHES

SENSORS

ECO

PUSH IN DRIVE

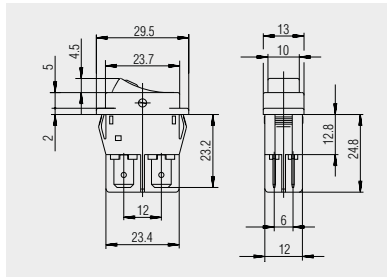


# SERIES 1550 - SINGLE AND DOUBLE-POLE ROCKER SWITCHES

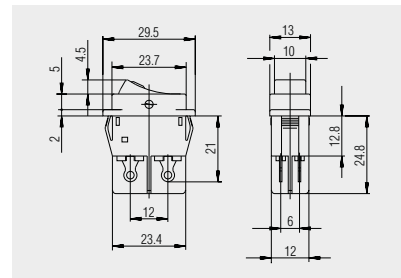
TO 16 (4) A 250 V AC



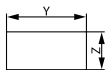
Basic types 1550 and 1555  
lower lying flange  
single and double-pole



Quick-connect terminal 6.3 x 0.8



Solder terminal

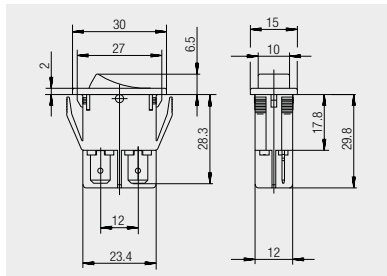


X = Wall thickness

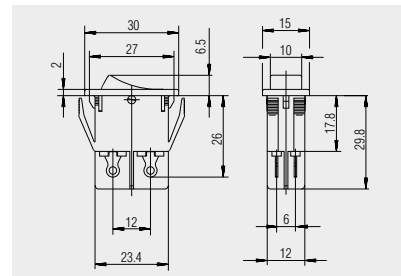
x	y	z
0.75 ... 1.25	26.2 <sup>-0.1</sup>	12.4 <sup>+0.1</sup>
2 ... 3	26.8 <sup>-0.1</sup>	12.4 <sup>+0.1</sup>
2 ... 3	26.8 <sup>-0.1</sup>	12.4 <sup>+0.1</sup>
1.25 ... 2	26.4 <sup>-0.1</sup>	12.4 <sup>+0.1</sup>



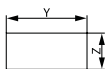
Basic type 1551 and 1552  
single and double-pole



Quick-connect terminal 6.3 x 0.8



Solder terminal



X = Wall thickness

x	y	z
0.8 ... 5.0	27.2 <sup>+0.1</sup>	12.2 <sup>+0.2</sup>

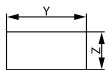


# SERIES 1550 - SINGLE AND DOUBLE-POLE ROCKER SWITCHES

TO 16 (4) A 250 V AC

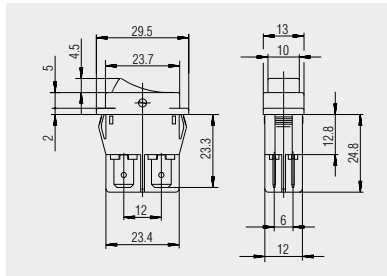


Basic types 1551 and 1552  
lower lying flange  
single and double-pole

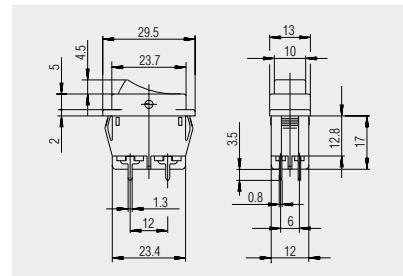


X = Wall thickness

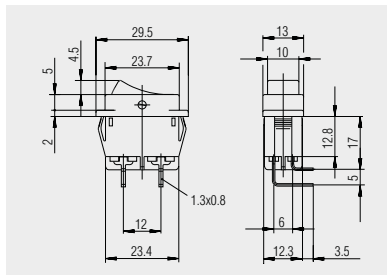
x	y	z
0.75 ... 1.25	26.2 <sup>-0.1</sup>	12.4 <sup>+0.1</sup>
1.25 ... 2	26.4 <sup>-0.1</sup>	12.4 <sup>+0.1</sup>
2 ... 3	26.8 <sup>-0.1</sup>	12.4 <sup>+0.1</sup>



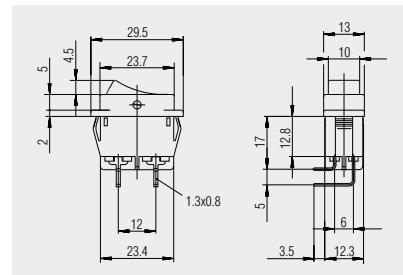
Quick-connect terminal 6.3 x 0.8



PCB terminal



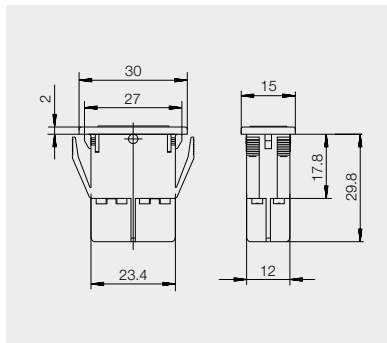
PCB terminal angled



PCB terminal angled mirror-inverted

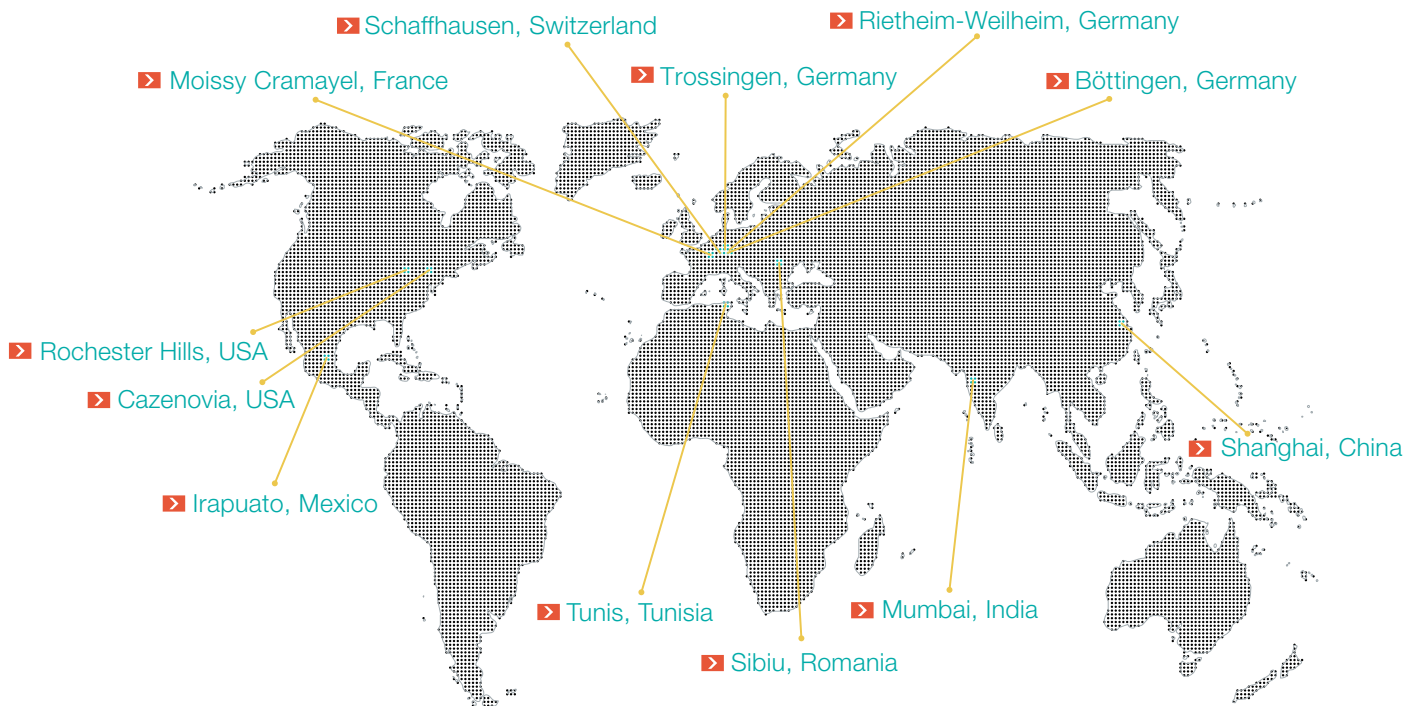


Dummy piece  
203.103.013



Dummy piece for series 1550 made of PA

# MARQUARDT INTERNATIONAL.



## HEADQUARTERS

### Marquardt Mechatronik GmbH

Schloss-Straße 16  
78604 Rietheim-Weilheim / GERMANY  
Tel. +49 (0)74 24/99-0  
Fax +31 (0)74 24/99-2399  
marquardt@marquardt.com  
[www.marquardt.com](http://www.marquardt.com)



## DISTRIBUTOR

### GEUKEN B.V.

Wattstraat 25a  
2723 RA Zoetermeer / NETHERLANDS  
Tel. +31 (0)79 361 60 70  
Fax +31 (0)79 361 40 90  
info@geuken.nl  
[www.geuken.nl](http://www.geuken.nl)