

SERIES 1205 - DOUBLE-POLE SLIDE SWITCHES

TO 10 (6) A 250 V AC

PRODUCT FEATURES







- ◆ Double-pole changeover switch
- ◆ Powerful up to 15 A
- ◆ Dust protected with felt gasket

ON REQUEST

- ◆ Other colors

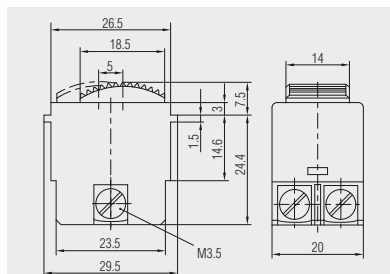
Mechanical life endurance	5E4
Material	actuator housing connections
	PA PA / PA glass fiber-reinforced silver-plated
Approval marks	
Suitable for appliances of protection class II	



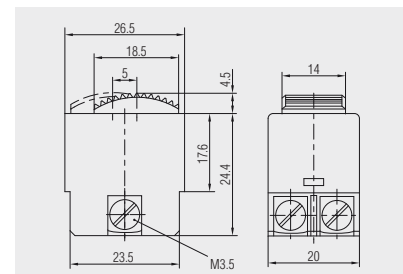
double-pole	Actuator color / printing	Housing color	15 A 125 AC	10 (6) A 250 V AC 1E4	Connection type	Connection description	Contact material	Stock version
Switch (DPDT)								
1205.0304			●			M3.5	Ag	
1205.0101				●		M3.5	Ag	●



Basic type 1205



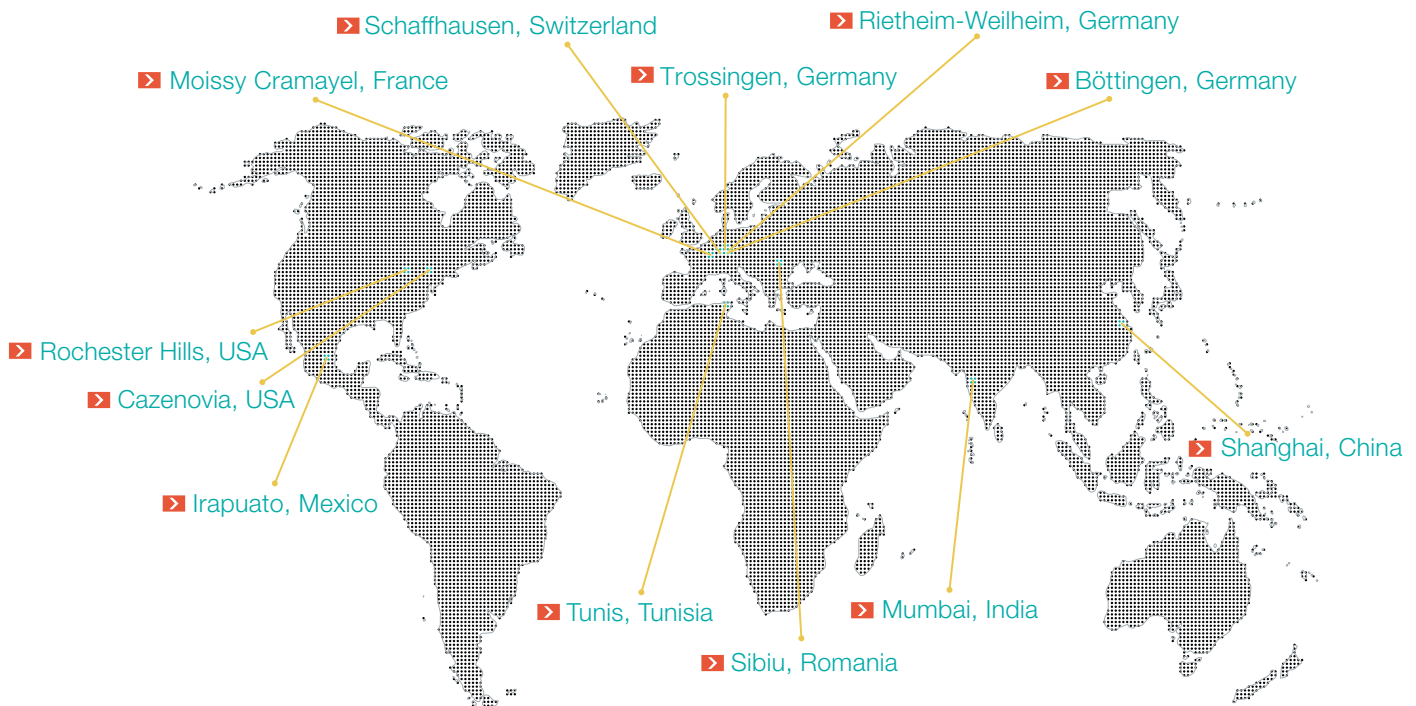
Screw connection M3.5
1205.0101



Screw connection M3.5
1205.0304 without collar

ROCKER SWITCHES
PUSHBUTTON SWITCHES
TOGGLE SWITCHES
SLIDE SWITCHES
ROTARY SWITCHES
FOOT SWITCHES
POWER TOOL SWITCHES
TACT AND KEY SWITCHES
SNAP-ACTION SWITCHES
MICRO-SIGNAL SWITCHES
SENSORS

MARQUARDT INTERNATIONAL.



HEADQUARTERS

Marquardt Mechatronik GmbH

Schloss-Straße 16
78604 Rietheim-Weilheim / GERMANY
Tel. +49 (0)74 24/99-0
Fax +31 (0)74 24/99-2399
marquardt@marquardt.com
www.marquardt.com

Geuken



DISTRIBUTOR

GEUKEN B.V.

Wattstraat 25a
2723 RA Zoetermeer / NETHERLANDS
Tel. +31 (0)79 361 60 70
Fax +31 (0)79 361 40 90
info@geuken.nl
www.geuken.nl