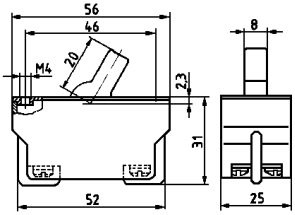
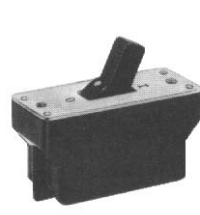


**description of basic version**

**toggle switch**

double pole ST-switch  
 toggle type 31/51 black with red point  
 clip plate steel tin-plated + chromated  
 with marking O - I  
 socket type 31 black  
 contact pairing Ag/Ag  
 terminals: chromated  
 contact type: delamination contact  
 life endurance mech: 100.000  
                           electr: 50.000

**screw terminal**



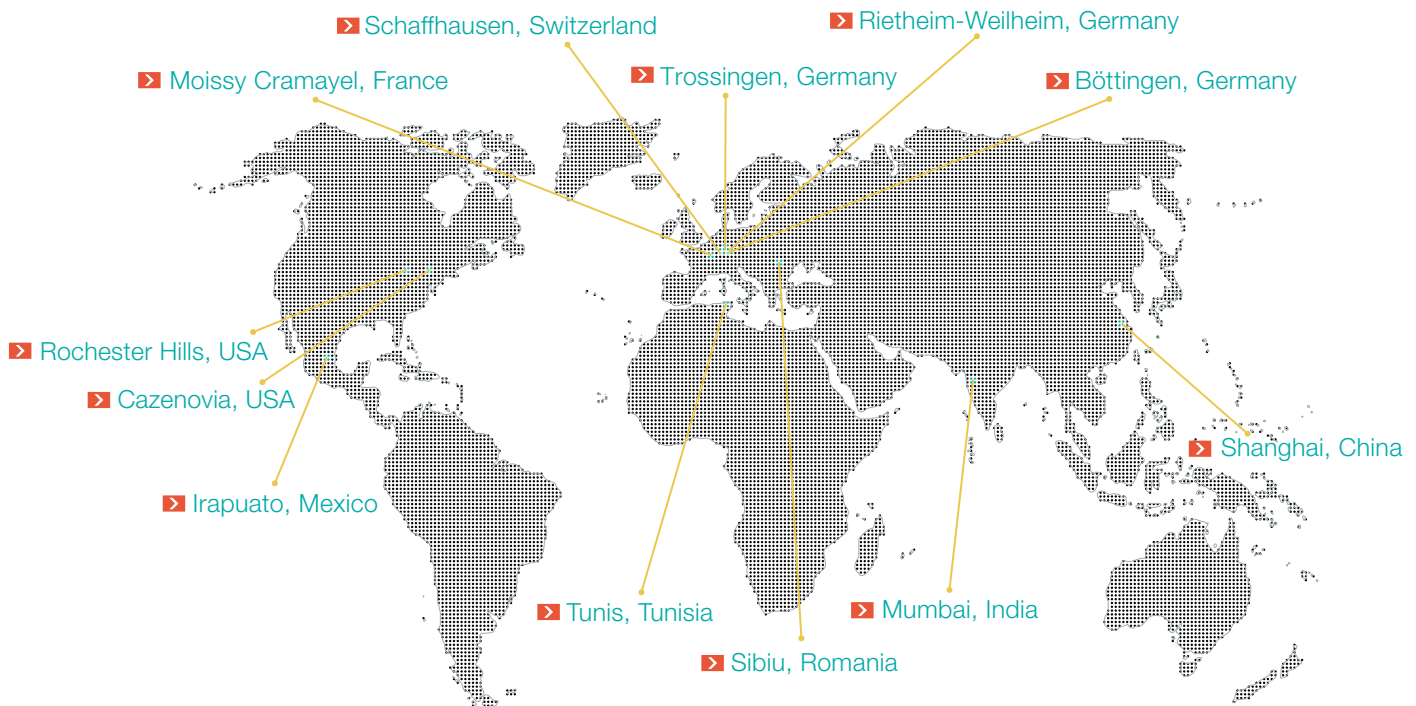
**0320.0101**

additional printing switch: production year/month according to DIN EN 60062

<p style="text-align: center;"><b>electrical rating and approval marks</b></p> <p><b>printed:</b></p> <div style="display: flex; align-items: center;"> <div style="flex: 1;"> <p>16(6)/250~5 E 4</p> <p>15 A 250V AC 1 1/2 HP R 17</p> </div> <div style="flex: 0.2; text-align: center;"> </div> </div> <p><b>not printed:</b></p>	<p style="text-align: center;"><b>switching function</b></p> <p><b>ST-switch:</b></p>
--	---

product No	kind of terminal	Po	S	F	<b>tolerances to basic version</b>
0302 x	screw M 4				toggle PA 27 long with rubber seal cutted

# MARQUARDT INTERNATIONAL.



## HEADQUARTERS

### Marquardt Mechatronik GmbH

Schloss-Straße 16  
78604 Rietheim-Weilheim / GERMANY  
Tel. +49 (0)74 24/99-0  
Fax +31 (0)74 24/99-2399  
marquardt@marquardt.com  
[www.marquardt.com](http://www.marquardt.com)

## Geuken



## DISTRIBUTOR

### GEUKEN B.V.

Wattstraat 25a  
2723 RA Zoetermeer / NETHERLANDS  
Tel. +31 (0)79 361 60 70  
Fax +31 (0)79 361 40 90  
info@geuken.nl  
[www.geuken.nl](http://www.geuken.nl)